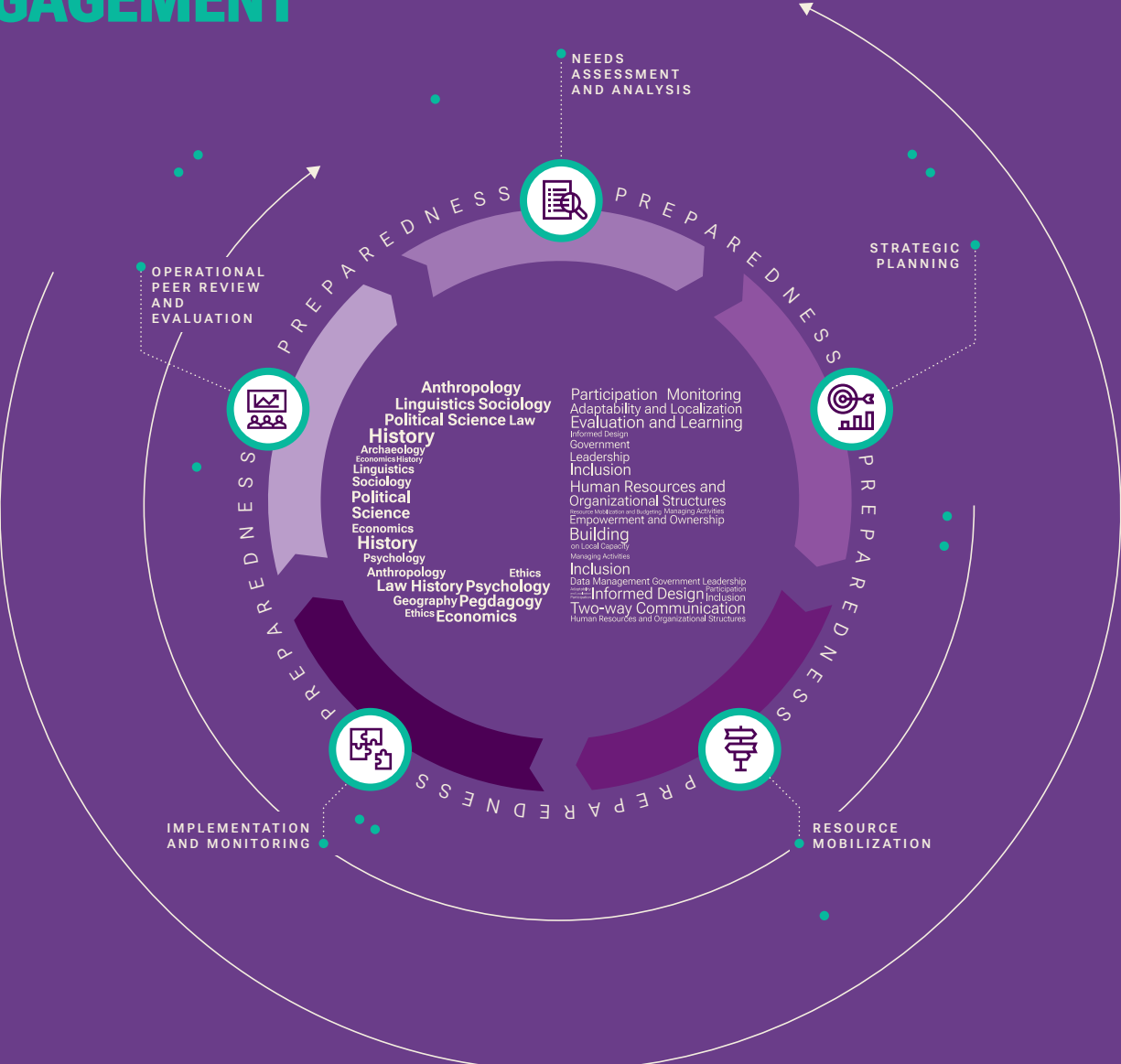


SOCIAL SCIENCES FOR COMMUNITY ENGAGEMENT IN HUMANITARIAN ACTION

DESK REVIEW OF COMMUNITY ENGAGEMENT INDICATORS ACROSS HUMANITARIAN RESPONSE PLANS (2022) AND DOCUMENTATION ON COMMUNITY ENGAGEMENT



Social Sciences for Community
Engagement in Humanitarian Action
**Desk review of Community
Engagement indicators across
Humanitarian Response Plans
(2022) and Documentation on
Community Engagement**

iMMAP team

UNICEF SBC Unit — SS4CE in HA team

Research Team and Authors

David Schoeller-Díaz - iMMAP

Jorge Becerra -iMMAP

Ivan Contreras -iMMAP

Gabriel Clavijo -iMMAP

Rania Elessawi -UNICEF

Anu Puri -UNICEF

Commentaries represent the personal views of the authors and do not necessarily reflect the positions of the United Nations Children's Fund.

This publication may be reproduced for educational and/or non-profit purposes with due acknowledgment of the source.

Contents

Foreword	2
Acknowledgements	4
List of Abbreviations	6
Introduction	8
Methodology	10
Review of CE indicators in HRPS.....	10
Review of CE documentation	11
Limitations	12
Review of CE indicators in HRPS.....	13
Review of CE documentation	13
Key findings	14
Review of CE indicators in HRPS.....	15
Review of CE documentation	16
Publications related to Community Engagement by organization.....	17
Review of CE documentation	19
CE outcome and output indicators by cluster	20
HRP countries with CE indicators by sub group	21
Terminology	22
Annexure	24

Foreword

Looking Ahead: Bridging theory and practice

Social Science for Community Engagement in Humanitarian Action Project (SS4CE in HA) is an initiative launched at the end of 2020, funded by the Bureau of Humanitarian Affairs, USAID. The main objectives focus on co-creation of global goods, designed as a collaborative approach that connects with global humanitarian and public health system-wide existing mechanisms that harness active participation of humanitarian organizations, academic institutions and donors. The processes undertaken for the development of global goods are also further framed in the 'decolonization of aid agenda' and provide clear recommendations for the implementation of actions that drive people-centred and community-led humanitarian and development programs. As envisioned, the project has made substantive progress towards systematically aligning social science informed community engagement actions to humanitarian architecture, tailored to different elements and enablers of the humanitarian program cycle (HPC).

Leveraging on the initial, exclusive public health emergency (PHE) focus at the time, due to the COVID-19 response, the SS4CE project developed a multi-pronged, governance structure that could facilitate the linkages and inform all humanitarian crises (e.g., natural hazards, conflicts and PHEs). This governance structure provided technical oversight to the development of SS4CE global goods, as well as positioning the processes and outputs of the project with key humanitarian stakeholders including the Inter-Agency Standing Committee (IASC), Core Humanitarian Standard (CHS), Clusters and committees, for the uptake and mainstreaming within the ongoing and relevant humanitarian program processes.

The Desk review of Community Engagement indicators across Humanitarian Response Plans (2022) and Documentation on

Community Engagement is an output of the Technical Working Group-3 (TWG-3). The desk review was prepared by TWG3 with the support of a team of consultants at IMMAP, an international organization that turns data into information and creates knowledge for decision makers operating in development contexts, situations of violence, post-disaster and conflict recovery.

The piece has two objectives: to identify commonly used sectoral/ cluster defined indicators regarding CE monitoring in line with the six Core CE Standards and to map CE specific objectives and multisectoral CE indicators. This desk review is a precursor and input for the CE Common M&E Framework, another product of the SS4CE in HA project.

Community engagement, informed by social sciences, addresses participation issues and the immediate needs of the affected communities but also strengthens community systems where marginalised groups become equal partners in finding solutions, having wider knowledge and understanding of social science disciplines' conceptual frameworks (e.g., historical, political, sociological, economical) and providing pathways to deal with systemic fallacies and challenges (i.e., social justice, gender equity, decolonization and localization).

We hope that this Desk review of Community Engagement indicators will contribute to evolving and identifying actions to reform community engagement processes, especially leveraging the spectrum of social sciences in challenging humanitarian contexts. This will be of utmost importance to respond effectively in current and future crises.

UNICEF, Vincent Petit

Key deliverables for the project are:

- Landscape report
- Ethics and Data Sharing Mapping Review
- Codes of Conduct Mapping Review
- Mapping of Capacity Development for the application of SS4CE in HA in Conflicts and Hazards
- Common Monitoring and Evaluation Framework for Community Engagement
- Compendium of Case Studies on the Use of community engagement to Inform Decision Making
- **Desk Review of Community Engagement Indicators Across Humanitarian Response Plans (2022) and Documentation on Community Engagement**
- Vision Paper on Community Engagement for Accountability to Affected Populations and Social and Behavior Change.
- Common Principles and Code of Conduct for the Application of SS4CE in HA

An aerial photograph showing several wooden boats on a river. The water is a muddy brown color. The riverbank is rocky and has some green vegetation. A wooden walkway leads down to the water. The boats are arranged in a line, and one boat in the center has people inside. The overall scene is a rural, possibly developing, area.

Acknowledgments

The SS4CE in HA project was convened by the Social and Behaviour Change Section, UNICEF, and is possible thanks to the support of the Bureau for Humanitarian Assistance, United States Agency for International Development (USAID).

The report was prepared by a team of consultants at iMMAP, an international organization that turns data into information and creates knowledge for decision makers operating in development contexts, situations of violence, post-disaster, and conflict recovery.¹ The iMMAP team was led by David Alejandro Schoeller-Diaz (Project Lead, CE and M&E Specialist), and composed of Jorge Becerra (Research Specialist), Iván Contreras (Information Management Specialist), and Gabriel Clavijo (Communications Specialist).

The process was overseen by UNICEF, chiefly Rania Elesawi and Anu Puri, and was based on the inputs and with the continued support of the Technical Working Group-3 (TWG-3). This output would not have been possible without the support of relevant stakeholders from the humanitarian community. The report builds upon a growing body of literature and reporting on CE, to support a better informed and more effective CE that is integrated across humanitarian decision-making and programming.

¹ <https://immap.org/>

TWG-3:SE Data Systems and Tools (in alphabetical order of institution)

Actknowledge	Heléne Clark
CHS	Bonaventure (Borno) Gbétoho Sokpoh Adrien Muratet
CLEAR Global, TWB	Jason Symons
DAAP	Tarito Kutadza
Education Cluster, Child Participation and Safeguarding	Serena Zanella
Erasmus University Rotterdam, ISS	Rodrigo Mena Fluhmann
Gates Foundation	Tom Black
Global Cluster, Coordination Unit Disability	Kirstin Lange
Ground Truth Solutions	Hannah Miles Elise Shea
HDX	Javier Teran Castro Anthony Burke
IASC, AAP Taskforce	Ben Noble
IFRC	Alexandra Sicotte-Levesque
Internews	Emily Cowlick Meghann Rhynard-Geil
IMMAP Colombia	Jeffrey Roberto Villaveces
IOM	Christie Bacal-Mayencourt
JHU	Marla Shaivitz Dominick Shattuck
MSF	Aurora Revuelta
Oxfam	Michelle Farrington
REACH	Nayana Das (Chair) Margot Fortin
Search For Common Ground	Adrienne Lemon
Sonar Global	David Napier Anna-Maria Volkmann Anu Puri (Co-Chair)
UNICF	EMOPS EMOPS/AAP SBC Data SBC Humanitarian Action SBC Partnerships Lilian Kastner Carla Daher Andres Esteban Ochoa Naureen Naqvi Rania Elessawi
WFP, Global AAP	Charlotte Lancaster

List of Abbreviations

AAP	Accountability to affected populations
CE	Community Engagement
DRRM	Disaster Reduction and Risk Management
HA	Humanitarian Action
HNO	Humanitarian Needs Overview
HPC	Humanitarian Programme Cycle
HRP	Humanitarian Response Plan
ICCG	Inter Cluster Coordination Group
IFRC	International Federation of Red Cross and Red Crescent Societies
OCHA	UN Office for the Coordination of Humanitarian Affairs
PHE	Public Health in Emergencies
RAP	Rapid Appraisal Procedure
RRP	Rapid Response Mechanism
RCCE	Risk Communication and Community Engagement
SBC	Social and Behavioral Change
SS4CE in HA	Social Sciences for Community Engagement in Humanitarian Action
UNDP	United Nations Development Programme
UNICEF	United Nations Children's Fund
WASH	Water, Sanitation and Hygiene
WHO	World Health Organization

Introduction

The present report is a desk review of indicators related to community engagement (CE) across 28 Humanitarian Response Plans (HRPs) produced in 2022. In addition, it also synthesizes some of the work conducted by Technical Working Group-3 (TWG-3) - Social Science for Community Engagement in Humanitarian Action Project (SS4CE in HA), in relation to a desk review of indicators related to CE in HRPs, as well as a broad cross-section of documentation about CE.²

This is an output of the SS4CE in HA project. The overall goal of the project is to develop global goods to strengthen global and regional demand and capacity for social science integration into humanitarian programming. As part of this project's governance structure, TWG-3 is working towards strengthening CE data systems including processes, uptake of evidence and capacities for HRP countries. For its deliverables, TWG-3 with the support of iMMAP developed a CE Common Monitoring and Evaluation (M&E) Framework. Since June 2022, evidence was collated to inform the development of the framework including Mapping CE Data Systems, Practices and Resources across 28 HRP Countries, case- studies with humanitarian organizations and consultation with the decision makers.

This desk review is a precursor and input for the CE Common M&E Framework, another product of TWG-3, SS4CE in HA. That framework aims to support a more standardized and effective CE that informs strategic decision-making.³

Report was conducted with the following objectives:

- Identify commonly used sectoral/ cluster defined indicators, regarding CE monitoring, in line with the six Core CE Standards.⁴
- Map CE specific objectives and multisectoral CE indicators.

The document summarizes the processes undertaken for understanding the analysis of CE in the humanitarian programme cycle, specifying methodological developments, findings and limitations. It encompasses a review of the humanitarian, academic and organizational documentation related to CE, or related concepts such as accountability to affected populations (AAP). This review considers the Mapping Assessment of CE Systems in HRP countries, including a Secondary Data Review (SDR) conducted in Sept-Oct 2022 of 7 HRP countries.

2 Some countries, like Ukraine, do not have an HRP, but a Flash Appeal.

3 The six Core CE Standards are: 1. Participation, 2. Empowerment and Ownership, 3. Inclusion, 4. Two-way Communication, 5. Adaptability and Localization, and 6. Building on Local Capacity. https://www.unicef.org/mena/media/7656/file/MinimumQualityStandardsforCommunityEngagement_TwoPageSummary.pdf%20.pdf

4 A joint initiative of UNICEF and BHA, USAID.

Consultations with TWG-3 select members: As part of a mapping survey on CE data integration, ten member organizations showed interest in developing detailed case studies about their CE interventions in HRP countries.⁷ Thus, as part of the case-studies, organizations are consulted on CE indicators and the process followed for data collection, use and reporting. These interviews enable the production of a compendium of case studies on CE data integration and help inform this desk review in terms of CE indicators and relevant documentation. Additionally, consultations were conducted with five information management officers involved with global clusters.⁸

Review of CE documentation

The review of complementary documentation related to CE involved the following steps:



Consultation in several secondary information sources in humanitarian repositories, R4V, Humanitarian Info, web pages of humanitarian organizations, among others.



Selection of the sources to be included in a single repository to analyze the information.



Development of a metadata file with its corresponding glossary of variables, to categorize each of the information sources in the repository and other sources mentioned within the documents.

Of the variables that make up the metadata, three components stand out, the first relates the traditional classifying information with characteristics of the sources, such as title, abstract, organization, place of publication and date of publication. The second component relates the concepts of CE, as well as AAP, CCEA (Communications, Community Engagement, and



© UNICEF/UN0743168/Naftalin

Accountability to Affected Populations), RCCE (Risk Communication and Community Engagement), among others, and whether they are defined. In addition, the information is classified by the most general standards of the CE, mentioning in which sections they refer to, for each of these. The third component is whether the document refers to the use of indicators related to CE. The inclusion of the source internet link of the publication is included for reference or download.

7. These organizations are: Ground Truth Solutions, iMMAP, Internews, IOM, Red Cross Red Crescent (RCRC), Zimbabwe National Network of PLHIV+ (ZNNP+), Oxfam, REACH, UNICEF, and WHO AFRO.

8. This includes the Global Health Cluster, the Global WASH Cluster, the Global Protection Cluster, and the Global Food Global Food Security Cluster.



Limitations

Review of CE indicators in HRPS

The review of CE indicators in the 2022 Humanitarian Response Plans (HRPs) has some limitations that should be considered:



Review was only focused on the 2022 HRPs, which means that it does not provide insight on how the monitoring of community engagement has evolved across time in the different HRPs.



It was based on published HRPs, which may not include all indicators that are present in unpublished or other humanitarian coordination resources.



Out of the 28 countries reviewed, 2 countries (Sudan and Venezuela) did not include any indicators in their HRP final documents, making it impossible to review community engagement indicators in these cases. Finally, in the case of Syria, there is not a public HRP document available which further limits the insight on CE in the country.

Review of CE documentation



This desk review and the accompanying interactive database do not encompass an exhaustive list of documents related to community engagement. Therefore, there may be other relevant documents that have not been classified and considered for this review. Thus, the interactive database is accompanied by a step-by-step guide to continue feeding relevant documents.



The process of classifying documentation related to CE relied on textual references to topics within the classification structure and the interpretation of analysts familiar with CE. This means that resulting classification may not always be precise, due to misalignment in textual queues and their intended meaning or differences in human interpretation. Thus, results may not always be precise, but are indicative of trends and patterns.

Key findings



Review of CE indicators in HRPS

The review of CE indicators and relevant documents displays a diversity in the definition of CE, the concepts related to it and the use of M&E terms.

For example, the definition of CE can vary depending on the focus, scope, and approach of the organization involved. Some definitions emphasize the active involvement of community members in decision-making and problem-solving processes. This approach views CE as a two-way process, where the community and institution both play a role in shaping the outcome. This definition places a strong emphasis on inclusion and empowerment of community members, and views CE as a means of creating more equitable and just communities. Meanwhile, other definitions of CE are centered on the responsibilities of organizations to engage with the communities they serve. This approach views CE as a form of outreach and service delivery, where the organization is responsible for providing information and resources to the community. This definition places a strong emphasis on the role of organizations in serving and supporting communities, and views CE as a means of building relationships and trust between institutions and communities.

Moreover, the review found that HRPs' logic frameworks are not always structured consistently, particularly in the definition of outcome and output indicators, which makes a standard terminology essential in the CE Common M&E Framework.

The review of CE indicators in HRPs show that they are related to several sectors, such as Shelter, Protection, Education in Emergencies (EiE), Water, Sanitation and Hygiene (WASH), Food Security and Early Recovery. However, CE indicators may be presented as relating to SBC, AAP, cross-cutting, etc., which are sometimes distinct or overlapping (e.g. indicators presented as multi-sector in one country resemble those presented as AAP in another).

Further analysis is needed to understand the number of CE indicators defined in each HRP, by discussing with cluster leads and exploring published and unpublished humanitarian coordination resources. This is because the review found that some indicators are similar but not common across countries, resulting in a lack of homogeneity in CE indicators.

Protection has the highest number of CE indicators in all HRPs reviewed, with 157 indicators, followed by Emergency Shelter/Camp Coordination and Camp Management/Non-Food Items, EiE, WASH, Food Security, and Early Recovery. Health and nutrition have the lowest number of indicators, with 12 and 6 respectively.

Iraq has the highest number of CE indicators, followed by Colombia, Afghanistan, Guatemala, and Honduras. However, this review only covers the 2022 HRPs and does not show how CE monitoring has evolved over time. Additionally, 2 out of 28 countries did not include indicators in their HRP final documents, making it impossible to review CE indicators in those cases (Sudan and Venezuela). In Syria, there is no public HRP document available.

In October 2022, the TWG-3 conducted a secondary data review of selected HNOs and HRPs. As part of its preliminary findings, it saw that the Humanitarian Programme Cycle (HPC) guidance provides several opportunities for CE data to inform and shape the annual humanitarian planning process, but gaps remain in its use in both Humanitarian Needs Overviews (HNOs) and HRPs. The data collected from direct consultations with affected people on their needs and priorities is generally absent from HNOs and HRPs. The HNOs and HRPs tend to be self-referential, relying on reports from UN agencies, international organizations, or INGOs rather than local sources, which presents a risk of incomplete or inaccurate planning assumptions.

There is also limited discussion of engagement with civil society actors to identify their needs, capabilities, and perspectives. While Joint Needs Assessments have contributed to making inter-sectoral analysis one of the Grand Bargain commitments, they are not primarily designed to consult affected people or involve them in decision-making. The existing evidence based on community response preferences and self-reported needs is uneven and, in some cases, it is unclear how much data is available. Finally, Complaint and Feedback Mechanisms provide a source of data that, if properly centralized and analyzed, could serve as a useful input during the HNO and HRP to speak to community recommendations, preferences, and priorities.⁹

9. Based on the preliminary document "Community engagement data in the HPC, Secondary data review of selected HNOs and HRPs -October 2022", presented in the TWG-3 meeting on October 27, 2022.

Review of CE documentation

The review was informed by 102 documents related to CE. The main topics highlighted in these documents in relation to CE can be broadly categorized into three areas: standards and best practices, community involvement and empowerment and partnerships and collaborations.

Standards and best practices in CE include quality standards, accountability, risk communication, protection from exploitation and abuse and monitoring and evaluation. The emphasis is on designing for results, integrating stakeholder and community engagement, and building capacity for government and local communities. Additionally, there are tools and resources for effective communication and engagement, such as anthropological insights, participative evaluation and landscape review.

Community involvement and empowerment is a key aspect of CE, with a focus on survivor – and community-led – crisis response, mental health and psychosocial support, and social and behavior change. The principles of community engagement for empowerment, user-centered community engagement and community involvement in area-based initiatives are highlighted.

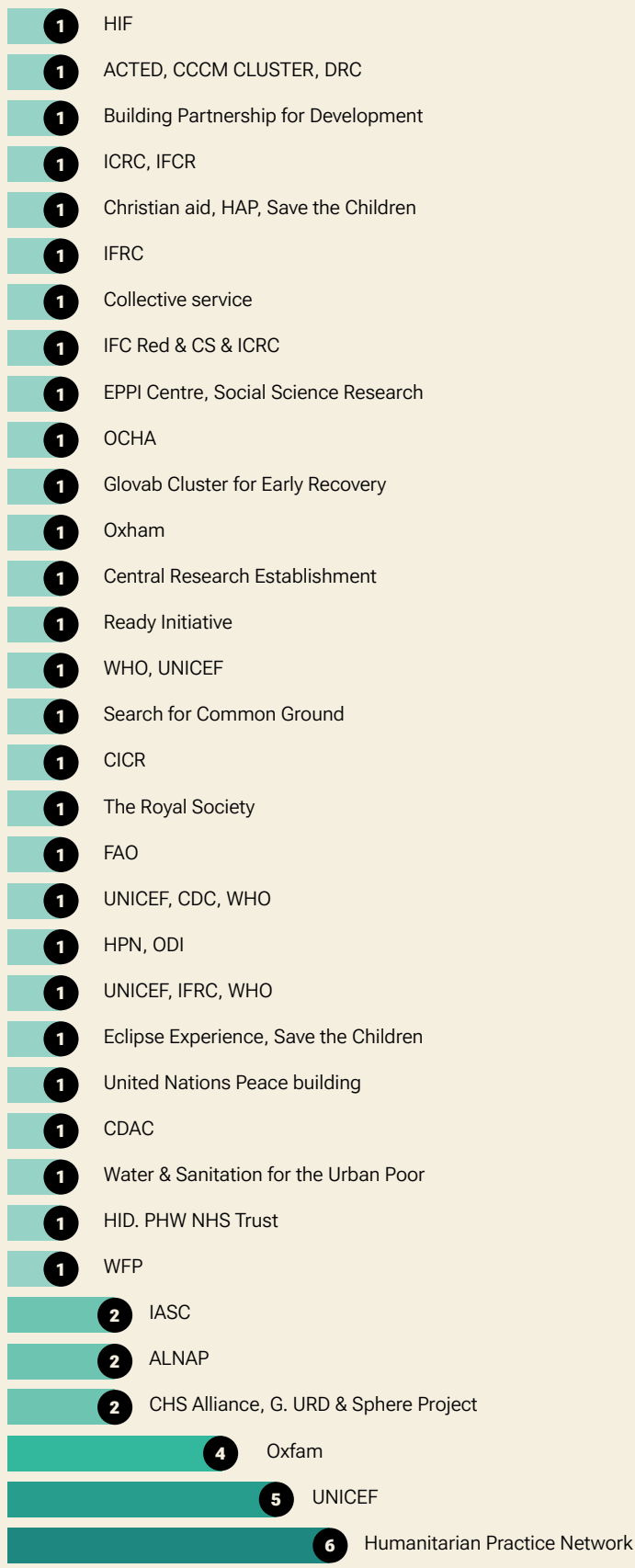
Partnerships and collaborations are important in achieving the goals of CE, with a focus on health via coalitions, collaborations and partnerships, peacebuilding, and humanitarian response plans for different countries. The call for rapid community engagement projects and the impact of accountability mechanisms in CE are also discussed.



© UNICEF/UNI403243/Filippov



The Humanitarian Practice Network (HPN) published the highest number of documents on CE (6) reviewed for this report and published a report jointly with the Overseas Development Institute (ODI). This was followed by UNICEF, which published 3 of the reviewed documents, as well as others published jointly with the World Health Organization (WHO), the US Center for Disease Control (CDC), and the International Federation of the Red Cross and Red Crescent (IFRC). The review was also based on documents from Oxfam, the Core Humanitarian Standard Alliance, the Inter-Agency Standing Committee (IASC), and numerous other UN Agencies and international NGOs.



Publications related to Community Engagement by organization

- There is a large percentage of documentation (39%) from humanitarian organizations which do not have the origin of the publication.
- Most of the HRP's identify and point out important aspects regarding CE, AAP, PSEA, among others, however 7% of these do not mention them in the report.
- The year 2017 saw the highest peak of publications on CE topics, reaching an approximate amount of 25 publications. The publications classified so far show that the concept of CE in humanitarian contexts began in 2004 and has only recently been implemented. 65% of the publications do not relate or mention CE indicators.
- At present, 21% of publications on CE-related topics are published in the United Kingdom. Although most of them correspond to or mention case studies of countries in crisis, the number of publications, including academic publications on CE issues, is remarkable.
- The concept of CE is not standardized in most publications and differs from one organization to another. This will depend on the context in which it is applied and the sectoral or cluster approach used. It is therefore interesting to find multiple readings of the same concept.

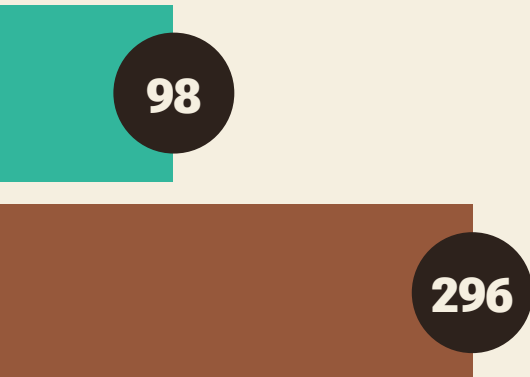
In addition to the classified documents, the desk review was informed by a survey on Mapping of CE Data systems tools, which was extended to key stakeholders involved in CE data integration in the HPC globally. An analysis of the qualitative open answers from that survey provides insight into the current state of CE data systems and their use in various organizations. For example, most organizations use a combination of manual and digital methods to collect and store CE data. Many also use a range of tools, such as spreadsheets, databases, and Customer Relationship Management (CRM) systems, to manage their CE data. However, there is a lack of standardization in the way organizations collect, store and manage CE data, which can lead to inconsistencies in the data.

One of the key challenges organizations face in managing CE data is ensuring the quality and accuracy of the data. This can be due to a lack of resources, such as staff and funding, to properly manage the data. Additionally, organizations often struggle with integrating CE data with other organizational data, such as financial data, which can limit the ability to analyze and use the data effectively.

Despite these challenges, many organizations recognize the importance of CE data and are taking steps to improve their CE data systems. Some are investing in more robust digital tools to better manage their CE data, while others are collaborating with other organizations to share data and best practices. Additionally, there is a growing interest in using CE data for strategic decision-making, such as identifying areas for improvement and evaluating the impact of CE initiatives.

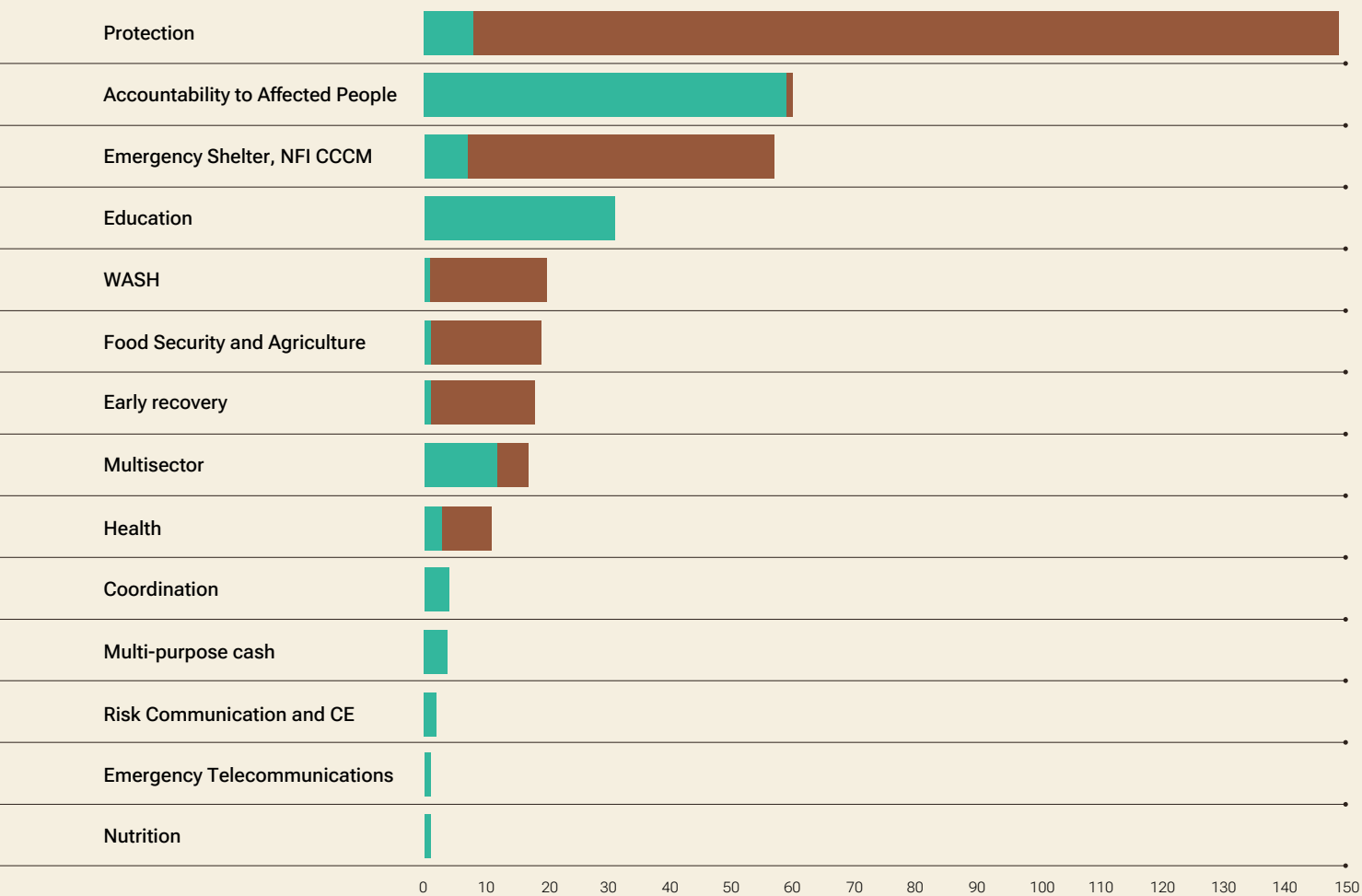
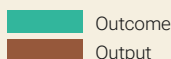
In conclusion, the analysis of the qualitative open answers from the Mapping of CE Data Systems Tools form highlights the current challenges and opportunities in managing CE data. While organizations face challenges in ensuring the quality and accuracy of the data and integrating it with other organizational data, they are also taking steps to improve their CE data systems and use the data for strategic decision-making. These findings can inform future research on CE data systems and the development of best practices for managing CE data.





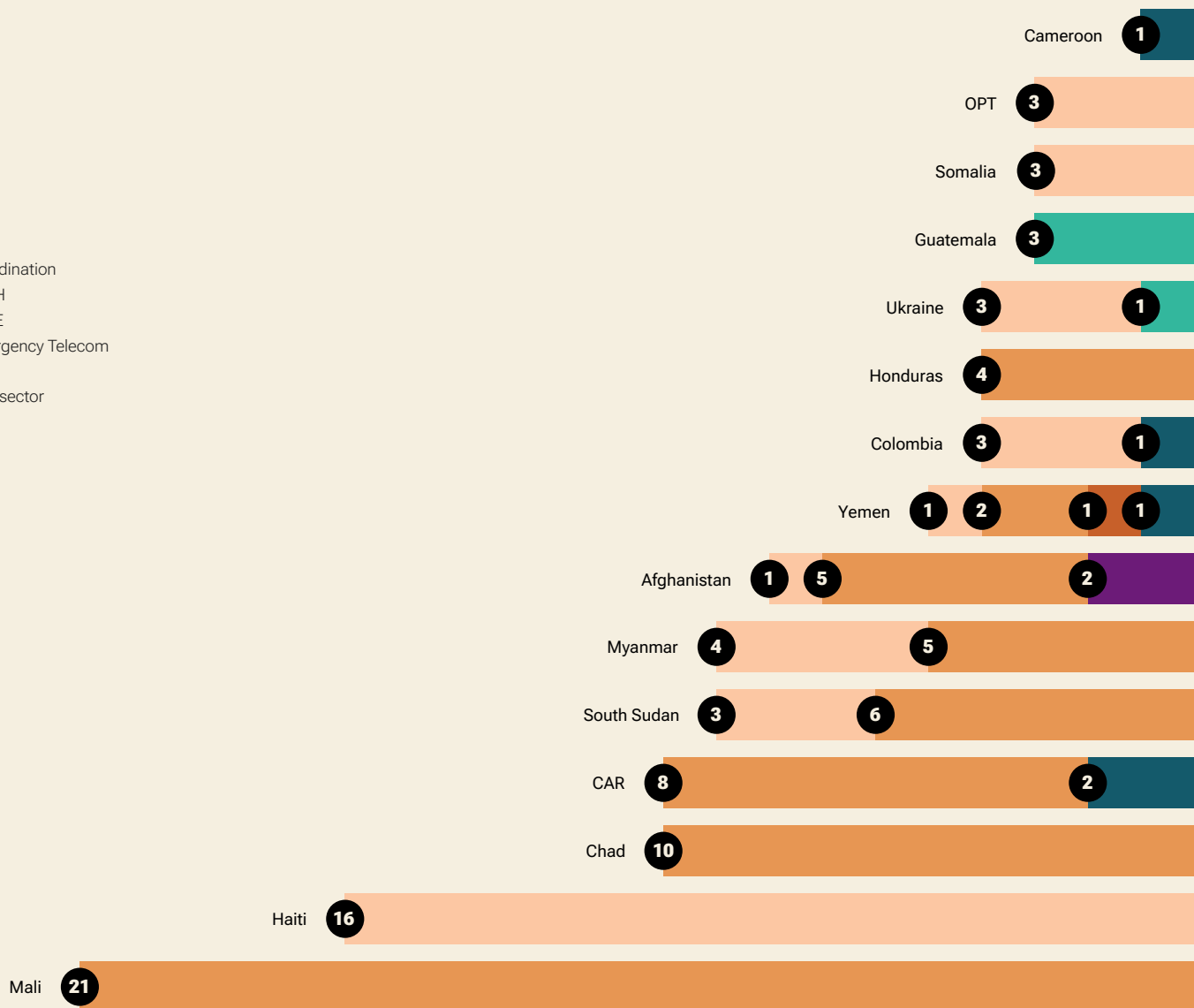
CE outcome and output indicators by cluster

Three quarters of CE indicators were at the output level, which suggests a greater emphasis on shorter term products or services, than on longer term or strategic CE impacts. However, this varied by cluster or subgroup. While most clusters, especially protection, emergency shelter, and education, used more output-level CE indicators, others, such as AAP and multi-sector used mostly outcome-level CE indicators.



HRP countries with CE indicators by sub group

Most CE indicators within sub-groups are related to AAP, followed by some presented as multi-sector, and fewer as coordination or A CE Common M&E Framework may foment a shared language that facilitates comparison, collaboration, and measurable progress towards CE. For this indicator review, the following M&E terms are used.



Terminology

A CE Common M&E Framework may foment a shared language that facilitates comparison, collaboration, and measurable progress towards CE. For this indicator review, the following M&E terms are used.

Indicators

Unit of measurement that specifies what is to be measured; indicators are intended to answer whether the desired impact, outcomes or outputs have been achieved. Indicators may be quantitative (e.g., percentages or numbers of people) or qualitative (e.g., perceptions, quality, type, knowledge, capacity).

Outcome indicator

Aligned with the outcome statements and aim to reflect the changes for individuals or groups of people that have occurred as a consequence of a particular programme or intervention.

Output indicator

Aligned with the activity plan and aims to reflect on whether the planned activity was carried out as intended.





© UNICEF/UN0847828/Haro



Annexure

HRP Countries

1. Afghanistan	11. Guatemala	21. Occupied Palestinian territory
2. Burkina Faso	12. Haiti	22. Somalia
3. Burundi	13. Honduras	23. South Sudan
4. Cameroon	14. Iraq	24. <i>Sudan</i>
5. Central African Republic	15. Libiya	25. Syria (HRP not publicly available)
6. Chad	16. Mali	26. Ukraine
7. Colombia	17. Mozambique	27. <i>Venezuela</i>
8. Democratic Republic of Congo	18. Myanmar	28. Yemen
9. El Salvador	19. Niger	
10. Ethiopia	20. Nigeria	

HRP CE indicators

Afghanistan

Strategic Objective SO1:

Timely, multi-sectoral, lifesaving, equitable, and safe assistance is provided to crisis-affected people of all genders and diversities to reduce mortality and morbidity.

Specific Objective SP1.1:

Provide timely, equitable and safe, life-saving emergency shelter, wash, health, education, psychosocial, protection, and NFI support to 21 million people of all genders and diversities including 504,320 newly displaced, 785,400 undocumented and refugee returnees, 72,308 refugees, 150,000 people affected by sudden-onset natural disasters.

Education	Education Type of indicator (Outcome/ Output)	Standards
Number of teachers (f/m) recruited	Output	Standard 1. Participation
Number of community members (including school management shuras) sensitized on the importance of EiE	Output	Standard 2. Empowerment & Ownership
Emergency Shelter, NFI CCCM	Emergency Shelter, NFI CCCM Type of indicator (Outcome/ Output)	Standards
Proportion of IDPs, returnees, refugees, non-displaced conflict and natural disaster affected and acutely vulnerable women, men and children of all ages receiving shelter assistance who express satisfaction about this support	Outcome	Standard 10. Monitoring, Evaluation & Learning
Health	Health Type of indicator (Outcome/ Output)	Standards
Number of persons reached with RCCE messages for COVID-19	Output	Standard 4. Two-way Communication

Specific Objective SP1.2:

Improve access to food and life-saving nutrition services for 21.56 million people facing acute food insecurity and malnutrition with associated diseases by the end of 2022.

SO1

SP1.1

SP1.2

Food Security and Agriculture	Food Security and Agriculture Type of indicator (Outcome/Output)	Standards
Number of calls related to food assistance responded to and resolved within a week	Output	Standard 1. Participation

S02

Strategic Objective S02:

Protection risks are mitigated, while protection and human rights needs for people of all genders and diversities are monitored and addressed through integrated and inclusive humanitarian action.

SP2.1

Specific Objective SP2.1:

Ensure safe and equitable and inclusive access to essential services, and access of humanitarian actors to those in need, regardless of gender, age diversity, disability, visibility, or other factors.

Protection	Protection Type of indicator (Outcome/ Output)	Standards
% of communities reporting benefiting from Community-Based Protection initiatives	Output	Standard 1. Participation
Number of community and or protection committees established or maintained	Output	Standard 6. Building on local capacity
Number of duty bearers, humanitarian and other partners receiving training and/or technical support on HLP	Output	Standard 6. Building on local capacity
Number of existing complaint and feedback mechanisms in the humanitarian response used for reporting SEA allegations.	Output	Standard 1. Participation
WASH	WASH Type of indicator (Outcome/ Output)	Standards
Number of people with disabilities receiving a WASH assistance delivered after inclusive needs assessment (to overcome the barriers in accessing the WASH facilities at community and household level)	Output	Standard 3. Inclusion
Number of women and girls receiving WASH assistance after consultations on GBV risks	Output	Standard 4. Two-way Communication

Accountability to Affected People	Accountability to Affected People Type of indicator (Outcome/ Output)	Standards
% of clusters and partners that have incorporated AAP activities in all project phases in AHF proposals	Outcome	Standard 10. Monitoring, Evaluation & Learning
Risk Communication and Community Engagement Working Group	Risk Communication and Community Engagement Working Group Type of indicator (Outcome/Output)	Standards
% of clusters and partners that have incorporated RCCE activities in their projects	Outcome	Standard 8. Planning and Preparation

Specific Objective SP2.2:

Human rights, inclusiveness, safety and dignity are promoted, and protection risks identified and addressed through inclusive protection monitoring, community-based mechanisms and humanitarian response.

Protection	Protection Type of indicator (Outcome/Output)	Standards
% of people who report improved access to rights and services because of their protection concerns being addressed	Output	Standard 1. Participation
Number of protection community centers established or maintained	Output	Standard 6. Building on local capacity
Number of people who participated in and or benefited from community-based protection activities	Output	Standard 1. Participation
Wash	WASH Type of indicator (Outcome/ Output)	Standards
Number of organizations reporting on the use of the WASH Perception Indicators (as per the AAP WG & WASH Cluster joint document)	Output	Standard 4. Two-way Communication
Multisector	Multisector Type of indicator (Outcome/ Output)	Standards
Number of clusters that have regular engagement and consultation with women's CSOs and use their inputs to inform planning and programming	Output	Standard 12. Partner Coordination

SP2.3

Specific Objective SP2.3:

Promote collective action on the centrality of protection, gender equality and the empowerment of women and girls, and a 'do no harm' approach by ensuring effective, inclusive and gender-responsive mechanisms for complaint, feedback and communicating with communities, GBV response, prevention and mitigation, PSEA and child safeguarding, and women's equitable and meaningful participation across the humanitarian response.

WASH	WASH Type of indicator (Outcome/ Output)	Standards
Number of organizations reporting PSEA focal points with clear reporting channel including alternative channels for the humanitarian beneficiaries	Output	Standard 4. Two-way Communication
Accountability to Affected People	Accountability to Affected People Type of indicator (Outcome/ Output)	Standards
% of people asked in WoAA who say they are aware of how to give feedback and make complaints	Outcome	Standard 10. Monitoring, Evaluation & Learning
% of people asked in WoAA who say they feel more informed about humanitarian assistance	Outcome	Standard 10. Monitoring, Evaluation & Learning
% of local NGOs attending WG and SWG meetings, and who lead the Working Group, sub-WGs, and task teams	Outcome	Standard 10. Monitoring, Evaluation & Learning
Number of analytical products created and disseminated to response and organizational decision makers	Outcome	Standard 10. Monitoring, Evaluation & Learning

SP3.1

Specific Objective SP3.1:

Increase the resilience of vulnerable households to shocks by improving access to inclusive livelihood opportunities and protect rural livelihoods and related food sources through emergency agriculture, livestock, other inclusive livelihood support and improved disaster risk reduction, in line with their livelihoods and seasonality, for people of all genders and diversities.

Food Security and Agriculture	Food Security and Agriculture Type of indicator (Outcome/ Output)	Standards
Percentage of the targeted people reporting increase in food production or income	Outcome	Standard 1. Participation

Emergency Shelter, NFI CCCM	Emergency Shelter, NFI CCCM Type of indicator (Outcome/ Output)	Standards
-----------------------------	--	-----------

Number of people receiving support to construct transitional shelters	Output	Standard 1. Participation
---	--------	------------------------------



Burkina Faso

S01

Objectif Stratégique OS1:

En 2022, 3 millions de personnes bénéficient d'une assistance humanitaire d'urgence multisectorielle en temps opportun, et intégrée nécessaire pour prendre en charge leurs problèmes critiques liés au bien-être physique et mental, avec une attention chez les enfants, les femmes et les personnes vivant avec un handicap.

SP1.4

Objectif Spécifique SP1.4:

1,9 million de personnes ont un accès sécurisé aux services d'eau, d'hygiène et d'assainissement, nécessaire pour garantir leur survie.

WASH	WASH Type of indicator (Outcome/ Output)	Standards
Nombre de personnes désagrégé par sexe et âge ayant bénéficié des activités de promotion à l'hygiène et mobilisation communautaire	Outcome	Standard 1. Participation

SP1.7

Objectif Spécifique SP1.7:

Le retour volontaire des personnes relevant de la compétence du HCR est assuré dans la dignité et la sécurité afin de garantir les conditions d'un retour et d'une réintégration durable.

Protection	Protection Type of indicator (Outcome/ Output)	Standards
Nombre de personnes ressources (structures communautaires existantes, points focaux VBG, leaders communautaires, différéntes comités) et PoCs formés en matière de VBG.	Output	Standard 9. Managing Activities

S02

Objectif Stratégique OS2:

En 2022, 3.4 millions de femmes, hommes, filles, garçons, personnes âgées et personnes en situation de handicap affectés par la crise humanitaire ont vu leur accès aux services sociaux de base amélioré à travers une assistance digne et adaptée à leurs besoins, fournie à temps et dans un environnement de protection.

SP2.1

Objectif Spécifique SP2.1: 3 million de femmes, hommes, filles, garçons et personnes en situation de handicap plus vulnérables ont un accès protégé, amélioré et continu à des services sociaux de base (Éducation, WASH, Santé, Nutrition), un habitat digne, une alimentation appropriée et des moyens de subsistance adaptés.

WASH	WASH Type of indicator (Outcome/ Output)	Standards
Nombre de personnes désagrégé par sexe et âge ayant bénéficié des activités de promotion à l'hygiène et mobilisation communautaire	Output	Standard 1. Participation

Objectif Spécifique SP2.2:

Les conditions de vie de 917 000 PDI sur les sites s'améliorent grâce à une gestion coordonnée et participative des sites, incluant des services d'information, de plainte et de protection.

Emergency Shelter, NFI CCCM	Emergency Shelter, NFI CCCM Type of indicator (Outcome/ Output)	Standards
Nombre d'évaluations de besoins conduites dans les sites, zones d'accueil de déplacées ou établissements similaires avec la participation des partenaires et des représentants des communautés	Output	Standard 8. Planning and Preparation
Nombre de projets communautaires soutenus pour un appui à la restauration des moyens d'existence	Output	Standard 1. Participation
Nombre de sites, de zones d'accueil de déplacés et d'établissements similaires disposant de gouvernance communautaire fonctionnelles et d'informations sur la disponibilité des services	Outcome	Standard 4. Two-way Communication
Nombre de comités d'auto-gestion communautaires fonctionnels avec une participation inclusive et équilibrée des hommes et des femmes	Output	Standard 3. Inclusion
Nombre de sites, de zones d'accueil de déplacées ou d'établissements similaires avec des mécanismes fonctionnels de plaintes et de retour d'information établis et fonctionnels	Output	Standard 4. Two-way Communication

Objectif Spécifique SP2.3:

3 millions de personnes vulnérables dans les zones prioritaires continuent de bénéficier d'un accès adéquat à l'information et aux moyens de prévention de la COVID-19.

Health	Health Type of indicator (Outcome/ Output)	Standards
Nombre des personnes couvertes par les interventions de communication sur le risque et engagement communautaire	Output	

WASH	WASH Type of indicator (Outcome/ Output)	Standards
Nombre de personnes désagrégé par sexe et âge ayant bénéficié des activités de promotion à l'hygiène et mobilisation communautaire pour la prévention du COVID-19	Output	Standard 1. Participation

SP3.1

Objectif Spécifique SP3.1:

1,7 million de femmes, hommes, filles, garçons et personnes en situation de handicap, à risque et victimes de violations, vivant dans les communautés, sur les sites de déplacés ou dans des lieux de regroupement ont accès à une assistance multisectorielle et / ou intégrée en protection (psychosociale, juridique informations et sécurité physique).

Education	Education Type of indicator (Outcome/ Output)	Standards
Nombre d'élèves garçons et filles (3-17 ans) dont les écoles ont développé des plans de préparation et de réponse aux urgences	Output	Standard 5. Adaptability and Localization
Protection	Protection Type of indicator (Outcome/ Output)	Standards
Nombre d'élèves garçons et filles (3-17 ans) dont les écoles ont développé des plans de préparation et de réponse aux urgences	Output	Standard 5. Adaptability and Localization
Nombre de mécanismes communautaires de protection de l'enfant renforcés et opérationnels	Output	Standard 6. Building on local capacity
% qui savent comment les organisations humanitaires décident de qui reçoit l'aide humanitaire et de qui ne la reçoit pas	Output	Standard 1. Participation
% qui savent comment faire des suggestions ou des plaintes sur l'aide/ les services qu'ils reçoivent	Output	Standard 1. Participation
% qui pensent que leurs opinions sur l'aide qu'ils reçoivent sont prises en considération par les acteurs humanitaires	Output	Standard 1. Participation
% qui se sentent à l'aise pour faire une plainte ou une suggestion en utilisant l'un des mécanismes qu'ils connaissent	Output	Standard 1. Participation
% qui pensent que l'aide reçue renforce leur capacité à faire face aux difficultés	Output	Standard 1. Participation
% qui se sentent en sécurité sur les sites d'assistance	Output	Standard 5. Adaptability and Localization
% qui pensent qu'ils ont besoin de soutien psychologique	Output	Standard 1. Participation
WASH	WASH Type of indicator (Outcome/ Output)	Standards
Nombre d'écoles ayant reçu un appui pour la prévention du COVID-20	Output	Standard 1. Participation
Nombre de centres de santé ayant reçu un appui pour la prévention du COVID-19	Output	Standard 1. Participation

Objectif stratégique OS3:

En 2022, 947 000 personnes bénéficient d'une assistance multisectorielle et intégrée nécessaire pour réduire leur vulnérabilité et améliorer leurs conditions de vie.

Objectif spécifique SP2.4:

En 2022, 947 000 personnes vulnérables bénéficient d'une réponse humanitaire renforcée en matière de redevabilité, PEAS, et approche genre.

Multisector	Multisector Type of indicator (Outcome/ Output)	Standards
-------------	---	-----------

Pourcentage de mécanismes de signalement et de gestion des plaintes mis en place lors de la mise en oeuvre des activités sectorielles.

Output

Standard 8.
Planning and Preparation



Cameroon

Strategic Objective S02:

Reduce the protection needs of 491,000 people affected by crisis.

Specific Objective SP2.1:

By the end of 2022, 491,000 people are reached with inclusive prevention and response activities on protection risks.

Early recovery	Early recovery Type of indicator (Outcome/ Output)	Standards
----------------	--	-----------

Number of persons sensitized on social cohesion, GBV and Human Rights

Output

Standard 6.
Building on local capacity



Burundi

SP3.1

Specific Objective SP3.1:

By the end of 2022, 958,000 vulnerable people affected by crisis have indiscriminatory, regular and safe access to quality basic services.

Education	Education Type of indicator (Outcome/ Output)	Standards
Number of persons sensitized on social cohesion, GBV and Human Rights	Output	Standard 1. Participation
Number of girls, boys and adolescents affected by crisis who received financial support or learning materials	Output	Standard 1. Participation
Emergency Shelter, NFI CCCM	Emergency Shelter, NFI CCCM Type of indicator (Outcome/Output)	Standards
Number of targeted households and communities with adequate housing stock available	Output	Standard 1. Participation
Number of targeted households and communities with increased capacity of construction skills	Output	Standard 1. Participation
Early recovery	Early recovery Type of indicator (Outcome/ Output)	Standards
Number of IDPs and host communities trained on small business management skills	Output	Standard 6. Building on local capacity
Number of IDPs and host communities provided with capital seed to start their own business	Output	Standard 16. Resource Mobilization and Budgeting

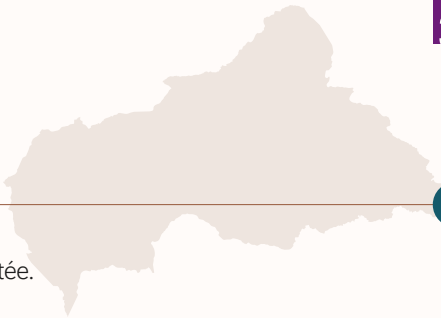
Se05

Sector Objective Se05:

Strengthen engagement for accountability to affected populations (AAP) by all stakeholders.

Coordination	Coordination Type of indicator (Outcome/ Output)	Standards
Number of local organizations trained on PSEA	Outcome	Standard 14. Human resources and organizational structure

CAR



0.1

Objectif 1:

Assurer une coordination transformée pour une réponse humanitaire plus efficace et mieux adaptée.

Coordination	Coordination Type of indicator (Outcome/ Output)	Standards
Nombre de clubs d'écoute communautaires fonctionnels	Outcome	Standard 8. Planning and Preparation

0.3

Objectif 3:

Doter la communauté humanitaire d'un système de financement humanitaire efficace et novateur qui réponde aux besoins des populations touchées par la crise.

Coordination	Coordination Type of indicator (Outcome/ Output)	Standards
Renforcement des mécanismes PSEA/GBV/ AAP en ligne avec les recommandations de la mission IASC et production de rapport semestriel	Outcome	Standard 8. Planning and Preparation



© UNICEF/UNHCR/IASA/MS/2018/06

S01

Objectif Stratégique 1:

En 2022, 1,6 million de personnes bénéficient d'une assistance d'urgence multisectorielle en temps opportun, et intégrée si possible, en cash ou en nature, nécessaire pour adresser leurs problèmes critiques liés au bien-être physique et mental, avec une attention particulière aux personnes âgées, handicapées et celles vivant dans les zones à haute intensité de conflit.

Accountability to Affected People	Accountability to Affected People Type of indicator (Outcome/ Output)	Standards
% de personnes affectées qui pensent que l'aide reçue couvre leurs besoins essentiels.	Outcome	Standard 10. Monitoring, Evaluation & Learning
% de personnes affectées qui perçoivent que l'aide vient quand elles en ont besoin.	Outcome	Standard 10. Monitoring, Evaluation & Learning
% de personnes affectées qui estiment que l'assistance touche les personnes qui en ont le plus besoin.	Outcome	Standard 10. Monitoring, Evaluation & Learning

S02

Objectif Stratégique 2:

En 2022, 1,3 million de femmes, hommes, filles, garçons, personnes âgées et personnes en situation de handicap affectés par la crise améliorent leurs conditions de vie à travers une assistance digne et adaptée à leurs besoins fournis à temps et dans un environnement de protection.

Emergency Shelter, NFI CCCM	Emergency Shelter, NFI CCCM Type of indicator (Outcome/ Output)	Standards
Nombre de personnes (désagrégé par sexe et âge) ayant accès un mécanisme de plainte/feedback en famille d'accueil mis en place à travers le CCCM Mobile.	Output	Standard 4. Two-way Communication

Accountability to Affected People	Accountability to Affected People Type of indicator (Outcome/ Output)	Standards
% de personnes affectées qui pensent que l'assistance reçue permet d'améliorer leurs conditions de vie.	Outcome	Standard 10. Monitoring, Evaluation & Learning
% de personnes déplacées internes qui pensent que l'aide reçue couvre leurs besoins essentiels.	Outcome	Standard 10. Monitoring, Evaluation & Learning

Objectif Stratégique 3:

En 2022, la protection et le respect des droits humains de 1,5 million de femmes, hommes, filles, garçons, personnes âgées et handicapées affectés par la crise sont assurés, en particulier des enfants et des survivantes de violences sexuelles et basées sur le genre.

Accountability to Affected People	Accountability to Affected People Type of indicator (Outcome/ Output)	Standards
% de personnes affectées qui se sentent en sécurité quand elles accèdent à l'aide humanitaire.	Outcome	Standard 10. Monitoring, Evaluation & Learning
% de personnes affectées qui pensent que les acteurs humanitaires les traitent avec respect.	Outcome	Standard 10. Monitoring, Evaluation & Learning
% de personnes affectées qui savent faire des plaintes ou suggestions.	Outcome	Standard 10. Monitoring, Evaluation & Learning

Chad

Objectif stratégique 1:

Sauver et préserver la vie et la dignité de 2,3 millions de personnes affectées par les crises.

Accountability to Affected People	Accountability to Affected People Type of indicator (Outcome/ Output)	Standards
Le % des personnes affectées qui se sentent informées au sujet de l'aide qu'elles peuvent recevoir	Outcome	Standard 10. Monitoring, Evaluation & Learning
Le % des personnes affectées qui sentent que les acteurs humanitaires les traitent avec respect	Outcome	Standard 10. Monitoring, Evaluation & Learning
Le % des personnes affectées qui sentent que le soutien qu'elles reçoivent les prépare à l'autonomie	Outcome	Standard 10. Monitoring, Evaluation & Learning



SP1.1

Objectif spécifique 1:

Fournir une assistance rapide, intégrée et coordonnée à 2,3 millions de personnes vulnérables en situation.

Health	Health Type of indicator (Outcome/ Output)	Standards
Nombre d'enquêtes réalisées.	Output	Standard 10. Monitoring, Evaluation & Learning

SP1.1

Objectif spécifique 1:

Favoriser l'accès 2,2 millions de personnes affectées par les crises aux services essentiels de base suffisant et de qualité.

Health	Health Type of indicator (Outcome/ Output)	Standards
Nombre de personnel médical et relais communautaires formés	Output	Standard 6. Building on local capacity

SP2.1

Objectif spécifique 2:

Soutenir 2,3 millions de personnes parmi les plus vulnérables via le renforcement des moyens de subsistance et l'accès à des solutions durables ainsi qu'aux opportunités économique.

Emergency Shelter, NFI CCCM	Emergency Shelter, NFI CCCM Type of indicator (Outcome/ Output)	Standards
Nombre de personnes ayant bénéficié du cash durant la construction des abris et la distribution de AME contribuant à l'auto- prise en charge	Output	Standard 1. Participation
Nombre de personnes déplacées exerçant les activités agricoles ou autres activités génératrices de revenus pour l'auto prise en charge	Output	Standard 1. Participation

Nutrition	Nutrition Type of indicator (Outcome/ Output)	Standards
Nombre de relais communautaires formés	Output	Standard 6. Building on local capacity

WASH	WASH Type of indicator (Outcome/ Output)	Standards
Nombre de personnes (hommes, femmes et enfants) affectés par le mouvement de population ayant accès à des infrastructures d'eau gérées de façon autonome par des comités fonctionnels	Output	Standard 6. Building on local capacity
Nombre de personnes bénéficiant de comités de gestion de points d'eau mis en place et opérationnels	Output	Standard 6. Building on local capacity
Nombre des agents de santé et relais communautaires formés sur la prévention de COVID-19	Output	Standard 5. Adaptability and Localization

S03

Objectif stratégique 3:

Contribuer à la protection de 373 mille personnes parmi des populations vulnérables et renforcer la redevabilité envers les populations affectées.

Accountability to Affected People	Accountability to Affected People Type of indicator (Outcome/ Output)	Standards
Le % des personnes affectées qui pensent que l'assistance touche ceux qui en ont le plus besoin	Outcome	Standard 10. Monitoring, Evaluation & Learning
Le % des personnes affectées qui se sentent en sécurité dans leur lieu de résidence	Outcome	Standard 10. Monitoring, Evaluation & Learning
Le % des personnes affectées qui se sentent à l'aise pour signaler des cas d'abus ou de mauvais traitements de la part du personnel humanitaire	Outcome	Standard 10. Monitoring, Evaluation & Learning
Le % des personnes affectées qui savent comment faire des suggestions ou soumettre des plaintes aux acteurs humanitaires	Outcome	Standard 2. Empowerment & Ownership
Le % des personnes affectées qui pensent qu'elles recevront une réponse à leur plainte	Outcome	Standard 2. Empowerment & Ownership
Le % des personnes affectées qui pensent que leurs opinions sont prises en compte dans la prise de décisions.	Outcome	Standard 2. Empowerment & Ownership

SP1.2

Objectif spécifique 1:

Mettre en place ou renforcer des mécanismes de protection en faveur de 673 000 personnes affectées, notamment les enfants et les autres groupes vulnérables, y compris les réfugiés, et renforcer le plaidoyer pour l'accès à la protection.

Protection	Protection Type of indicator (Outcome/ Output)	Standards
Nombre de personnes atteintes par les activités de protection à base communautaire	Output	Standard 1. Participation

SP2.1

Objectif spécifique 2:

Promouvoir et renforcer la participation de 400 milles personnes parmi les populations affectées et la redevabilité des acteurs humanitaires envers les populations affectées.

Protection	Protection Type of indicator (Outcome/ Output)	Standards
Nombre de séances de sensibilisation organisées à l'intention des autorités traditionnelles et leaders religieux et communautaires	Output	Standard 6. Building on local capacity
Nombre de réseaux communautaires de protection de l'enfance mis en place	Output	Standard 6. Building on local capacity

SP3.1

Objectif spécifique 3:

Promouvoir et renforcer la participation de 400 milles personnes affectées et la redevabilité envers les populations affectées.

Emergency Shelter, NFI CCCM	Emergency Shelter, NFI CCCM Type of indicator (Outcome/ Output)	Standards
Nombre de personnes incluant les personnes vivant avec handicap (hommes et femmes) représentant les communautés déplacées et communautés hôtes faisant partie des structures communautaires participant dans la prise de décision concernant les services dans les sites	Output	Standard 5. Adaptability and Localization
Nombre de personnes, membres (hommes et femmes) des structures communautaires formés sur les différents thèmes visant la gouvernance, participation, maintenance des infrastructures, auto- prise en charge, etc	Output	Standard 5. Adaptability and Localization
Nombre de personnes dans les sites et dans les communautés d'accueil qui ont reçu la réponse suite à leurs plaintes formulées	Output	Standard 5. Adaptability and Localization

Objectif spécifique 4:

Appuyer les acteurs nationaux (Gouvernement et Société Civile) dans la promotion d'un environnement propice au bien-être et à la protection des populations.

Protection	Protection Type of indicator (Outcome/ Output)	Standards
Nombre de personnes affectées dont les droits sont protégés à travers les mécanismes communautaires de protection	Output	Standard 1. Participation





Colombia

SP1.1

Objetivo Específico 1.1:

Aumentar las medidas orientadas a reducir los riesgos y las afectaciones de las poblaciones expuestas a situaciones críticas en protección, con énfasis en violencia basada en género.

Multisector	Multisector Type of indicator (Outcome/ Output)	Standards
Número de personas que comparten sus preocupaciones y hacen preguntas / aclaraciones sobre los servicios de apoyo disponibles para abordar sus necesidades a través de mecanismos de rendición de cuentas establecidos.	Outcome	Standard 1. Participation
Número de mecanismos de queja y retroalimentación disponibles, accesibles, seguros y confidenciales para las comunidades. (Donde las personas pueden dar a conocer necesidades y preocupaciones, incluidos posibles casos o sospecha de explotación y/o abuso sexual).	Outcome	Standard 1. Participation
Número de personas de las comunidades desagregadas con enfoque diferencial (edad, género, discapacidad y etnia) que participan en actividades de sensibilización sobre Prevención de Explotación y Abuso Sexual (PEAS)	Outcome	Standard 3. Inclusion

S02

Objetivo Estratégico 2:

Contribuir a las soluciones duraderas para el restablecimiento de derechos y la estabilización socioeconómica de las personas vulnerables por factores de violencia, cambio climático y desastres, y eventos de salud pública; con un enfoque de protección y enfoque diferencial de edad, género y diversidad.

SP2.1

Objetivo Específico 2.1:

Fortalecer capacidades comunitarias de organización, resiliencia, participación, gestión de crisis comunitarias y planes de gestión comunitarios del riesgo, e incidencia para la satisfacción de derechos y medios de vida con un enfoque de género y diferencial. Objetivo Específico 2.2: Fortalecer capacidades institucionales para afrontar y gestionar las crisis y garantizar los derechos de personas afectadas.

Emergency Shelter, NFI CCCM	Emergency Shelter, NFI CCCM Type of indicator (Outcome/ Output)	Standards
Número de personas que acceden a soluciones de infraestructura comunitaria temporal (servicios sociales, aulas temporales)	Output	Standard 3. Inclusion

Food Security and Agriculture	Food Security and Agriculture Type of indicator (Outcome/ Output)	Standards
Número de personas que usan estrategias negativas de afrontamiento asociadas al consumo de alimentos (desagregado por género, edad, grupo étnico).	Output	Standard 3. Inclusion
Número de agentes comunitarios y profesionales de la salud que fortalecen sus capacidades en temas de atención nutricional (incluyendo lactancia materna) desagregado por género, edad, grupo étnico.	Output	Standard 9. Managing Activities
Protection	Protection Type of indicator (Outcome/ Output)	Standards
Número de personas desagregadas con enfoque diferencial (edad, género, discapacidad, diversidad y étnia) que acceden a mecanismos de queja y retroalimentación para dar a conocer necesidades y preocupaciones (incluidos posibles casos o sospecha de explotación y/o abuso sexual presuntamente perpetrados o cometidos por personal humanitario del SNU y personal asociado en la ejecución de proyectos y programas.	Output	Standard 4. Two-way Communication
Número de NNA, padres y cuidadores que se benefician de acceso a salud mental y apoyo psicosocial, con enfoque diferencial de edad, género y diversidad.	Output	Standard 3. Inclusion
Número de organizaciones de mujeres y personas LGBTI que se benefician del fortalecimiento de capacidades para la identificación y mitigación de riesgos de VBG.	Output	Standard 3. Inclusion
Número de personas de comunidades afectadas que participan en procesos y/o intervenciones de protección basada en la comunidad.	Output	Standard 1. Participation
Número de personas que se benefician de la implementación de actividades y/o esquemas de protección colectiva.	Output	Standard 1. Participation
WASH	WASH Type of indicator (Outcome/ Output)	Standards
Número de personas afectadas y/o en riesgo (hombres, mujeres, niñas y niños) que pueden acceder de manera oportuna a información, servicios e intervenciones apropiados para su cultura, edad, condición y su género relacionados con la promoción de la higiene.	Output	Standard 3. Inclusion

Early recovery	Early recovery Type of indicator (Outcome/ Output)	Standards
Número personas fortalecidas en gestión del riesgo comunitario y sistemas de alerta temprana. desagregado por género, discapacidad, etnia y ciclo vital	Output	Standard 6. Building on local capacity
Numero de personas sensibilizadas en estrategias de prevención y protección del C-19, desagregado por género, discapacidad, etnia y ciclo vital	Output	Standard 6. Building on local capacity

SP2.2

Objetivo Específico 2.2:

Fortalecer capacidades institucionales para afrontar y gestionar las crisis y garantizar los derechos de las personas afectadas.

Education	Education Type of indicator (Outcome/ Output)	Standards
Número de NNA que lideran iniciativas en el marco de los proyectos humanitarios y participan de manera sistemática y significativa	Output	Standard 7. Informed Design
Health	Health Type of indicator (Outcome/ Output)	Standards
Número de personas de la comunidad que participan y se benefician de las acciones de preparación, respuesta y recuperación ante las emergencias desde salud, incluidas las dedicadas a la partería, la sabiduría y promoción de la salud que apoyan los servicios de salud. Así como los que promueven la rehabilitación basada en comunidad.	Output	Standard 6. Building on local capacity
WASH	WASH Type of indicator (Outcome/ Output)	Standards
Número de municipios/ comunidades que cuentan o mejoran los mecanismos para planear la respuesta a emergencias, evaluar, prevenir y combatir los riesgos y peligros en la prestación de servicios WASH incluyendo acciones de mitigación de los efectos del cambio climático; incluyendo mejoras en planes de contingencia, conformación de comités, entre otros escenarios de organización planteados por las comunidades.	Output	Standard 6. Building on local capacity

SP2.3

Objetivo Específico 2.3:

Contribuir a acciones de recuperación temprana que permitan favorecer procesos de acceso y recuperación de medios de vida y de restablecimiento de derechos para las personas y comunidades afectadas, con énfasis en sobrevivientes de violencia basada en género.

Education	Education Type of indicator (Outcome/ Output)	Standards
Número de personas beneficiarias de proyectos humanitarios que participan de la planeación de la respuesta a emergencias	Output	Standard 7. Informed Design
Emergency Shelter, NFI CCCM	Emergency Shelter, NFI CCCM Type of indicator (Outcome/ Output)	Standards
Número de personas apoyadas en sus soluciones duraderas (retorno, reubicación, integración) que reciben información y/o participan en talleres en temas relacionados con el sector de Alojamiento y Asentamiento	Output	Standard 4. Two-way Communication
Número de personas que se benefician de las acciones de mejoramiento o nueva construcción en infraestructuras comunitarias en apoyo a las soluciones duraderas	Output	Standard 1. Participation
Early recovery	Early recovery Type of indicator (Outcome/ Output)	Standards
Número de personas beneficiadas de procesos de retorno, reubicación, integración local o reparaciones colectivas desagregado por género, discapacidad, etnia y ciclo vital	Output	Standard 3. Inclusion



© UNICEF/UN0364711/Ferrero

DRC

SO1

Objectif stratégique 1:

La réponse multisectorielle permet de couvrir les besoins vitaux de 8,8 millions de personnes afin de préserver leur intégrité physique et mentale.

SP1.1

Objectif spécifique 1.1:

Les besoins vitaux (abris, AME, éducation, EHA, santé, protection) de 2,3 millions de pers. affectées par des mouvements de population récents (personnes déplacées et retournées depuis moins de 6 mois, familles d'accueil, communautés hôtes, personnes réfugiées) sont couverts.

Education	Education Type of indicator (Outcome/ Output)	Standards
Nombre d'écoles disposant d'un mécanisme fonctionnel de retour et redevabilité (feedback et gestion des plaintes, y compris pour des cas de SEA et VBG) en milieu scolaire adaptés aux enfants qui ont été mis en place ou renforcés	Output	Standard 4. Two-way Communication
Protection	Protection Type of indicator (Outcome/ Output)	Standards
Nombre de PDI, retournés et communautés hôtes profilées désagrégé par âge/genre/ handicap, dont les besoins urgents et spécifiques sont identifiés	Output	Standard 3. Inclusion
Nombre de ménages qui ont accès à la terre ou au logement dans les zones de retour ou de déplacement à travers l'action de négociation	Output	Standard 4. Two-way Communication

SP1.5

Objectif spécifique 1.5:

L'accès aux services de prise en charge de 1,3M de pers. affectées par des incidents de protection liés à la crise humanitaire (victimes/ survivants de violence, y compris VBG, ENA, EAFGA, victimes de REG, pers. en situation de handicap, pers. déplacées et retournées) est assurée et les mécanismes de prévention des risques de protection sont renforcés.

Protection	Protection Type of indicator (Outcome/ Output)	Standards
Nombre d'ENA (y compris en situation de handicap) identifiés et placés dans une prise en charge familiale transitoire ou une solution de remplacement appropriée	Output	Standard 3. Inclusion
Nombre de leaders communautaires, y compris les leaders des associations féminines formées sur la mise en oeuvre des audits de sécurité (analyse et atténuation des risques de VBG)	Output	Standard 6. Building on local capacity

Objectif stratégique 2:

La réponse multisectorielle permet de réduire les vulnérabilités et d'améliorer les conditions de vie de 3,5M de personnes.

Objectif spécifique 2.1:

L'accès aux biens et services essentiels (abris ou logement, AME, éducation de base) de 940 676 personnes les plus vulnérables affectées par des mouvements de population prolongés (pers. déplacées et retournées entre 7 et 12 mois, familles d'accueil, personnes réfugiées) est assuré.

Protection	Protection Type of indicator (Outcome/ Output)	Standards
Nombre de ménages femmes qui ont un accès équitable aux terres et aux logements suite aux actions de plaidoyers et de lobbying	Output	Standard 4. Two-way Communication
Nombre de personnes (autorités) qui bénéficient de renforcement de capacités pour la prévention et la gestion pacifique des conflits fonciers désagrégé par âge/ genre/ handicap	Output	Standard 6. Building on local capacity

Objectif spécifique 2.5:

L'accompagnement à moyen terme de 1,4M de personnes affectées par des incidents de protection (victimes/survivants de violence, y compris VBG, ENA, EAFGA, victimes de REG, personnes en situation de handicap) est assuré.

Protection	Protection Type of indicator (Outcome/ Output)	Standards
Nombre de personnes ayant bénéficié d'une séance de sensibilisation ou autre activités de cohabitation pacifique désagrégé par âge/genre/handicap	Output	Standard 6. Building on local capacity
Nombre d'EAFGA ayant bénéficié d'un soutien à la réintégration socio-économique et réinsertion communautaire	Output	Standard 3. Inclusion
Nombre de personnes affectées par des conflits ayant bénéficié des séances directes d'éducation aux risques des mines, REG 816k et autres EEI, y compris des leaders communautaires	Output	Standard 3. Inclusion
Nombre de femmes leaders d'associations féminines formées dans la lutte contre les VBG désagrégés par âge/handicap	Output	Standard 3. Inclusion



El Salvador

S01

Strategic Objective 1:

Contribute to protecting and saving the lives and dignity of people affected by, and at risk of, the impacts of violence and displacement and the effects of disasters and COVID-19 through a humanitarian response with an intersectoral perspective and a focus on human rights, protection, age, gender, diversity and cultural relevance.

SP1.1

Specific Objective 1.1:

Strengthen and contribute to the timely access of essential and integrated services for food security, protection, health, water, sanitation and hygiene, nutrition, education and shelter for affected people (including migrants, displaced people, refugees, pregnant adolescents, LGTBIQ+, people with disabilities, victims and survivors of violence, children and adolescents and the elderly, among others) during emergencies that meet humanitarian response standards through a rights- and age-based approach.

Emergency Shelter, NFI CCCM	Emergency Shelter, NFI CCCM Type of indicator (Outcome/ Output)	Standards
Percentage of people who perceive an improvement in the care of their basic needs (based on people served).	Output	Standard 1. Participation
Protection	Protection Type of indicator (Outcome/ Output)	Standards
Number of people from public institutions and civil society trained in protection and human rights issues	Output	Standard 6. Building on local capacity

SP1.2

Specific Objective 1.2:

Contribute to the reduction of protection risks and to respond to violations of rights of people affected by the effects of disasters, violence, including GBV, forced displacement, migration and COVID-19.

Emergency Shelter, NFI CCCM	Emergency Shelter, NFI CCCM Type of indicator (Outcome/ Output)	Standards
Number of shelters with self- management or community participation mechanisms	Output	Standard 1. Participation

S02

Strategic Objective 2

Support and strengthen sustainable solutions through the humanitarian development collaboration to contribute to the promotion of timely access to essential services, respect for rights, self-sufficiency and resilience of affected and at-risk people with a protection approach that accounts for gender, age and diversity.

SP2.2

Specific Objective 2.2

Prevent and mitigate risks related to people affected by disasters, violence, including GBV, displacement, and COVID-19 through the strengthening of community bonds and infrastructure to promote and demand rights and promote resilience-building.

Emergency Shelter, NFI CCCM	Emergency Shelter, NFI CCCM Type of indicator (Outcome/ Output)	Standards
Number of people benefiting from the improvement or new construction of community infrastructure in support of durable solutions.	Output	Standard 1. Participation
Number of communities with rehabilitated or improved spaces for resilience and social coexistence.	Output	Standard 1. Participation
Number of shelters or communities improving access to basic services following the implementation of appropriate management mechanisms.	Output	Standard 1. Participation

Food Security and Agriculture	Food Security and Agriculture Type of indicator (Outcome/ Output)	Standards
Strengthening of capacities on good practices to achieve sustainable production	Output	Standard 9. Managing Activities

Protection	Protection Type of indicator (Outcome/ Output)	Standards
Number of women surveyed who confirmed that they have expanded their protection network and know who to turn to if they need support thanks to response activities.	Output	Standard 5. Adaptability and Localization
Number of trained community structures receiving timely, reliable and useful information that will enable them to participate actively and effectively in decision making on measures that affect them	Output	Standard 5. Adaptability and Localization

Specific Objective 2.5

Promote access for people affected by disasters or social emergencies to critical information and awareness of rights, risks, options, and services allowing them to make informed decisions, promote positive social change, and raise concerns that are appropriate to their characteristics and situation, including age, gender and disability. In addition, affected individuals and communities will be consulted and actively involved throughout the humanitarian response cycle.

Emergency Shelter, NFI CCCM	Emergency Shelter, NFI CCCM Type of indicator (Outcome/ Output)	Standards
Number of implemented participation mechanisms.	Output	Standard 1. Participation
Number of people (women, men and others) who are active in these mechanisms (disaggregated by age).	Output	Standard 1. Participation

Protection	Protection Type of indicator (Outcome/ Output)	Standards
Number of peaceful coexistence projects to strengthen community structures and to build social bonds implemented in prioritized communities.	Output	Standard 6. Building on local capacity





Ethiopia

S01

Strategic Objective S01:

Reduce loss of life, physical and psychosocial harm among the most vulnerable population affected by conflict and drought, including 5.0 million IDPs and 12.3 million non-displaced, by decreasing the prevalence of hunger, acute malnutrition, public health threats and outbreaks, and exposure to protection risks, by the end of 2022.

SP1.1

Specific Objective SP1.1:

Deliver protection, gender, age, diversity, and conflict-sensitive essential life-saving services in WASH, Health, Nutrition and Protection, to 3.1 million displaced, 3.4 million non-displaced conflict and climate people.

Emergency Shelter, NFI CCCM	Emergency Shelter, NFI CCCM Type of indicator (Outcome/ Output)	Standards
Number of people in sites requiring access to functioning complaints and INDICATORS feedback mechanisms IDPs are aware of an existing CFRM at site level and are using it	Output	Standard 1. Participation
Number of people in sites requiring inclusive and representative governance structures Inclusive and representative community structures are accountable to and have the capacity to meet the needs of the site population	Output	Standard 1. Participation

Protection	Protection Type of indicator (Outcome/ Output)	Standards
Number of girls, boys and caregivers provided with level 2 community-based mental health and psychosocial support, including access to safe and friendly spaces with intersectoral programming interventions	Output	Standard 1. Participation

Protection	Protection Type of indicator (Outcome/ Output)	Standards
Number of locations with victim assistance services mapping established (Beneficiary data not required)	Output	Standard 6. Building on local capacity

Strategic Objective S02:

Sustain the lives of 16.5 million people requiring humanitarian assistance and protection and basic services, including 12.5 million non-displaced, 3.9 million IDPs and persons with disabilities across 889 woredas, by ensuring safe, dignified, accountable and equitable access to livelihoods and protection and other essential services by the end of 2022 and enhance the protection environment.

S02

SP2.2

Specific Objective SP2.2:

Scale up and provide CCCM, WASH, Education, Health, Nutrition, Shelter, Protection, Education and NFIs services to 3.9 million IDPs by the end of 2022.

Protection	Protection Type of indicator (Outcome/ Output)	Standards
Number of persons benefiting from awareness raising, capacity building and community- based activities concerning their rights and addressing protection risks that affect them	Output	Standard 6. Building on local capacity
Number of persons benefiting from support to access alternative dispute resolution mediation, negotiation, arbitration and conciliation, and formal justice system to resolve HLP related disputes	Output	Standard 1. Participation
Number of sites with functional community- led committees with inclusive participation and representation	Output	Standard 6. Building on local capacity
% of caregivers (women and men) who report increased knowledge of caring and protective behaviors towards children under their care following their participation in a family strengthening programme	Output	Standard 6. Building on local capacity
Number of individuals from the community trained to provide community based GBV interventions e.g., para-counselors, paralegal etc.	Output	Standard 6. Building on local capacity
% of Explosive Ordnance Risk Education beneficiaries that demonstrate an increase in knowledge between unsafe and safe practices.	Output	Standard 6. Building on local capacity

S03

Strategic Objective S03:

Enhance the protection environment and avoid and reduce harm by mainstreaming protection and gender and age considerations in the multisectoral response and contribute to protection outcomes.

SP3.1

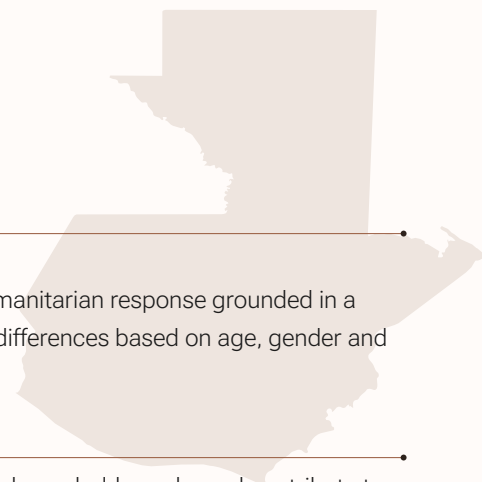
Specific Objective SP3.1:

Support 877,000 affected people through multisectoral response and contribution to protection outcomes by enhancing the protection environment and avoiding and reducing harm by mainstreaming protection.

Protection	Protection Type of indicator (Outcome/ Output)	Standards
Number of girls, boys, women and men (including community and religious leaders, local authorities, youth and adolescents' group, women- led organizations, CBOs, etc.) who have been provided with gender and age sensitive information, training and sensitization in order to prevent and mitigate the risk of violence, exploitation, abuse, neglect and harmful practices	Output	Standard 6. Building on local capacity
Number of women and men humanitarian workers from non-CP sectors, community members, and government actors who received training on CP issues to prevent and mitigate the CP risks and enhance cross-sectoral referral	Output	Standard 6. Building on local capacity
Number of individuals trained on Explosive Ordnance Risk Education from service providers, including risk education teams, community representatives and humanitarian staff	Output	Standard 6. Building on local capacity



© UNICEF/JUN0827416/Ayene



Guatemala

SO1

Strategic objective 1:

Protect and help save the lives and preserve the dignity of severely affected people through a humanitarian response grounded in a human rights-based approach and an intersectional perspective which takes into consideration differences based on age, gender and diversity that is culturally and linguistically relevant.

SP1.2

Specific Objective 1.2: Assist in the recovery of habitability conditions in 9,898 homes, including household goods, and contribute to the reestablishment of WASH services through “building back better”.

Health	Health Type of indicator (Outcome/ Output)	Standards
Number of health and community personnel trained and/or sensitized to address the sexual and reproductive health needs of affected people from a rights-based and culturally relevant perspective	Output	Standard 6. Building on local capacity
Number of community emergency committees strengthened on the detection, stabilization and referral of maternal and neonatal complications, including the provision of PPE, medicines and essential health supplies	Output	Standard 6. Building on local capacity
Number of traditional midwives strengthened on the detection, stabilization and referral of maternal and neonatal complications, including the provision of PPE, medicines and essential health supplies	Output	Standard 7. Informed Design
WASH	WASH Type of indicator (Outcome/ Output)	Standards
% of people participating in WASH planning meetings satisfied with the process (disaggregated by sex/gender, disability and age)	Output	Standard 8. Planning and Preparation
Early recovery	Early recovery Type of indicator (Outcome/ Output)	Standards
Number of people rehabilitating their livelihoods and productive capacities in the farm component (milpa)	Output	Standard 6. Building on local capacity
Number of people rehabilitating their livelihoods and productive capacities in the backyard component (home)	Output	Standard 6. Building on local capacity
Number of women accessing family farming projects	Output	Standard 3. Inclusion
Number of women gaining access to native seeds and agricultural tools for medicinal plant production	Output	Standard 3. Inclusion
Number of women producing food at home and/or community gardens through seed procurement and composting	Output	Standard 3. Inclusion

Specific Objective 1.3:

Contribute to the reduction of morbidity and mortality among children and women through the delivery of comprehensive maternal, neonatal and infant health care, and effective detection, treatment and timely referrals, including for acute malnutrition, with broad-based community participation, addressing personal, family and community risks and promoting appropriate feeding and nutrition practices.

Nutrition	Nutrition Type of indicator (Outcome/ Output)	Standards
Number of community emergency committees strengthened in health and nutrition	Output	Standard 6. Building on local capacity

Specific Objective 1.4:

Facilitate the generation or reestablishment of protective environments and immediate response to human rights violations for people facing critical protection risks and those affected by GBV, guaranteeing dignity, autonomy, risk reduction and access to essential services.

Protection	Protection Type of indicator (Outcome/ Output)	Standards
Number of people, including women, children and adolescents, with specific protection needs who access humanitarian assistance and/or specialized comprehensive services through a differentiated approach based on age, gender and diversity	Output	Standard 3. Inclusion

Specific Objective 1.5:

Strengthen complaint mechanisms, including for PSEA, within the framework of Accountability to Affected People (AAP).

Protection	Protection Type of indicator (Outcome/ Output)	Standards
Number of women and agents of protection who access key information and safe channels to report and receive care for sexual exploitation and abuse through ICTs and smart phones.	Output	Standard 4. Two-way Communication
Number of community mechanisms for reporting, care, referral and follow-up on SEA cases adapted to the local context and led by women	Output	Standard 4. Two-way Communication

SP2.1

Specific Objective 2.1

Restore the operation of networks for health services and educational facilities, providing safe water in the departments affected by Eta and Iota, to guarantee continuity and equal access to culturally relevant first and second level health services, including sexual and reproductive health services.

Education	Education Type of indicator (Outcome/ Output)	Standards
% of teachers with access to culturally relevant didactic and pedagogical material	Output	Standard 5. Adaptability and Localization
WASH	WASH Type of indicator (Outcome/ Output)	Standards
Number of people participating in WASH planning meetings satisfied with the process	Output	Standard 8. Planning and Preparation

SP2.2

Specific Objective 2.2:

Contribute to strengthening the capacities of families, communities and key actors for a comprehensive approach to nutrition and recovery of food security of reproductive, maternal and neonatal health as well as the population's nutritional status and the emergence of new cases of acute malnutrition.

Food Security and Agriculture	Food Security and Agriculture Type of indicator (Outcome/ Output)	Standards
Number of women or youth empowered in organizing women's rights and savings groups	Output	Standard 2. Empowerment & Ownership
Nutrition	Nutrition Type of indicator (Outcome/ Output)	Standards
Number of leaders trained in preparedness and response to nutritional issues	Output	Standard 6. Building on local capacity
Number of communities with warning systems in place	Output	Standard 1. Participation

SP2.3

Specific Objective 2.3:

Strengthen national and territorial mechanisms for protection, resilience, equal participation and empowerment of the affected population with emphasis on women, children and adolescents, the LGBTIQ+ community and people on the move through rebuilding the social fabric to promote rights and reduce protection risks, including GBV.

Emergency Shelter, NFI CCCM	Emergency Shelter, NFI CCCM Type of indicator (Outcome/ Output)	Standards
Number of protective infrastructure projects, including shelters, identified in a participatory manner that are implemented and improved at the community level	Output	Standard 1. Participation
Protection	Protection Type of indicator (Outcome/ Output)	Standards
Number of women participating in decision- making on humanitarian action and/or protection responses to vulnerable and high-risk people	Output	Standard 5. Adaptability and Localization
Number of organizations, local and community networks and women- led groups actively participating in GBV management and coordination mechanisms	Output	Standard 9. Managing Activities
Number of people in affected communities trained in psychological first aid, mental health and psychosocial services	Output	Standard 6. Building on local capacity
Number of protective infrastructure projects, including shelters, identified in a participatory manner that are implemented and improved at the community level	Output	Standard 6. Building on local capacity
Number of organizations, local and community networks, and women-led groups actively involved in GBV management and coordination mechanisms	Output	Standard 9. Managing Activities
Number of people with specific protection needs and those in mixed migration flows, with emphasis on women, who access livelihood programs to mitigate protection risks and strengthen resilience, disaggregated by sex, age and ethnicity	Output	Standard 3. Inclusion
Number of people with specific protection needs and those in mixed migration flows, with emphasis on women, who access livelihood programs to mitigate protection risks and strengthen resilience, disaggregated by sex, age and ethnicity	Output	Standard 3. Inclusion
Multi-purpose cash	Multi-purpose cash Type of indicator (Outcome/Output)	Standards
Indicator 1: % of projects where key decisions are influenced by affected communities at all key stages of the project cycle (assessment, design, implementation, monitoring and final review)	Output	Standard 5. Adaptability and Localization

Indicator 2: % of affected people who feel that humanitarian assistance providers take their opinions into consideration. - Core Humanitarian Standard Indicators, CHS Alliance

Output

Standard 1.
Participation

Indicator 3: % of affected people who know how to ask questions, make suggestions or complaints regarding humanitarian assistance and report misconduct and abuse by providers. - Core Humanitarian Standard Indicators, CHS Alliance

Output

Standard 1.
Participation



Haiti

OS1:

D'ici fin 2022, les efforts conjoints des acteurs humanitaires et du développement contribueront à une réduction D'au moins 20% du nombre de personnes ayant besoin d'une assistance humanitaire.

OSS 1.1:

La collaboration et les synergies effectives entre les acteurs de développement et humanitaires locaux, nationaux et internationaux renforcent, dans les zones géographiques prioritaires, la résilience aux chocs des ménages et des communautés.

Multisector	Multisector Type of indicator (Outcome/ Output)	Standards
IOSS 1.1.1 : Nombre de personnes dans les communes prioritaires capables de mieux anticiper, faire face et de se relever à la suite des effets d'un choc	Outcome	Standard 2. Empowerment & Ownership
IOSS 1.3.1 : Pourcentage des personnes ciblées par le HRP qui déclarent avoir accès à au moins forme d'assistance fournie à travers le système de protection sociale	Outcome	Standard 4. Two-way Communication

OS 2:

D'ici fin 2022, 60% de la population ciblée a la capacité de satisfaire à ses besoins essentiels (éducation,santé, eau, alimentation, habitat, protection).

OSS 1.1:

La collaboration et les synergies effectives entre les acteurs de développement et humanitaires locaux, nationaux et internationaux renforcent, dans les zones géographiques prioritaires, la résilience aux chocs des ménages et des communautés.

Multisector	Multisector Type of indicator (Outcome/ Output)	Standards
Pourcentage des personnes assistées dans le cadre du HRP qui déclarent que leur capacité à répondre à leurs besoins est renforcée	Outcome	Standard 1. Participation

OSS 2.1:

D'ici fin 2022, l'accès aux services essentiels (éducation, santé, eau, protection, habitation) dans les zones géographiques ciblées sera renforcé pour au moins 500 000 personnes, en tenant compte du genre, de l'âge et du handicap.

S01

SP1.1

S02

SP1.1

SP1.2

Multisector	Multisector Type of indicator (Outcome/ Output)	Standards
IOSS 2.1.1: Nombre de personnes assistées, dans les zones géographiques prioritaires, qui déclarent avoir un meilleur accès aux services essentiels	Outcome	Standard 1. Participation

S03

OS 3:

Tout au long du cycle de programme humanitaire, les actions entreprises contribuent à renforcer la protection et la redevabilité envers 1,5 million de personnes, particulièrement pour les groupes de personnes les plus vulnérables.

SP2.1

OSS 2.1:

D'ici fin 2022, l'accès aux services essentiels (éducation, santé, eau, protection, habitation) dans les zones géographiques ciblées sera renforcé pour au moins 500 000 personnes, en tenant compte du genre, de l'âge et du handicap.

Multisector	Multisector Type of indicator (Outcome/ Output)	Standards
IOS 3.1: Un mécanisme de feedback et de plaintes inter-organisations est mis en place d'ici fin 2021	Outcome	Standard 8. Planning and Preparation
IOS 3.2: Proportion de la population affectée faisant usage des mécanismes de plaintes et de rétroinformation établis par les acteurs humanitaires	Outcome	Standard 1. Participation
IOS 3.3: Proportion de plaintes rapportées qui ont reçu une réponse opportune et efficace	Outcome	Standard 1. Participation

SP3.1

OSS 3.1:

D'ici fin 2022, dans les communautés ciblées, augmentation de 60% de l'accès aux services de prévention et de prise en charge minimum qui répondent aux besoins spécifiques identifiés par les personnes à risque et/ ou survivant(e)s de violence, d'exclusion, d'abus et/ou d'exploitation y compris sexuels.

Multisector	Multisector Type of indicator (Outcome/ Output)	Standards
IOSS 3.1.1: Nombre de personnes avec des besoins spécifiques, assistées dans les zones géographiques prioritaires, qui déclarent avoir un meilleur accès aux services essentiels	Outcome	Standard 1. Participation

OSS 3.2:

D'ici fin 2022, 40% du nombre de personnes ciblées parmi les groupes les plus vulnérables, en particulier les femmes et les personnes en situation de handicap bénéficieront d'une assistance spécifique qui renforcera leurs capacités d'autonomisation.

Multisector	Multisector Type of indicator (Outcome/ Output)	Standards
IOSS 3.2.1: Pourcentage de personnes en situation de handicap assistées qui estiment que l'aide reçue a renforcé leurs capacités d'autonomisation	Outcome	Standard 3. Inclusion
IOSS 3.2.2: Pourcentage de femmes assistées qui estiment que l'aide reçue a renforcé leur capacité d'autonomisation	Outcome	Standard 3. Inclusion

OSS 3.3:

En 2021 et 2022, 100% de personnes affectées sont engagées d'une manière inclusive et non-discriminatoire dans la définition de leurs besoins, la planification, la mise en œuvre, le suivi et l'évaluation de la réponse humanitaire.

Multisector	Multisector Type of indicator (Outcome/ Output)	Standards
IOS 4.1 : Proportion de la population ciblée bénéficiant d'une intervention appropriée à leurs besoins à la suite d'une catastrophe naturelle ou d'un choc	Outcome	Standard 1. Participation



© UNICEF/UN0821838/

SO4

OS 4:

Au moins 60% des personnes ciblées à la suite d'une catastrophe naturelle ou d'un autre choc bénéficient d'une intervention opportune, efficace et coordonnée.

SP4.1

OSS 4.1:

Le niveau d'accès aux services de base avant le choc est rétabli pour au moins 60% de la population ciblée, au plus entre 1 à 3 mois (ou plus en fonction de l'ampleur du choc)

Multisector	Multisector Type of indicator (Outcome/ Output)	Standards
IOSS 4.1.1: Nombre de structures de services de base affectées par un choc fonctionnelles au plus tard 3 mois après le choc par département, commune et section communale	Outcome	Standard 6. Building on local capacity

SP4.2

OSS 4.2:

La capacité d'autosuffisance d'au moins 60% de la population ciblée est rétablie grâce à un accès prévisible et équitable aux moyens de subsistance, au plus entre 1 et 3 mois après le choc (ou plus en fonction de l'ampleur du choc).

Multisector	Multisector Type of indicator (Outcome/ Output)	Standards
IOSS 4.2.1: Pourcentage du nombre de personnes ciblées à la suite d'un choc ou d'une catastrophe qui n'ont plus besoin d'une assistance d'urgence fournie par les partenaires 3 mois après la survenue de l'événement	Outcome	Standard 8. Planning and Preparation

SP4.3

OSS 4.3:

Les institutions nationales, départementales, communales, locales et la société civile impliquées dans la gestion des risques et désastres ont leurs capacités renforcées dans les domaines de prévention et d'atténuation, ii) de préparation, iii) de coordination et de la réponse aux catastrophes.

Multisector	Multisector Type of indicator (Outcome/ Output)	Standards
IOSS 4.3.1 : Nombre de structures du SNGRD au niveau national et départemental capables de mettre en œuvre des mécanismes efficaces pour assurer la coordination de la réponse aux chocs	Outcome	Standard 12. Partner Coordination
IOSS 4.3.2 : Nombre de structures du SNGRD au niveau communal et local capables de mettre en œuvre des mécanismes efficaces pour assurer la coordination de la réponse aux chocs d'ici fin 2022	Outcome	Standard 12. Partner Coordination

Honduras



AAP

AAP

Protección	Protection Type of indicator (Outcome/ Output)	Standards
------------	--	-----------

Number of indigenous and Afro- descendant people (disaggregated by age and sex) who report that the care services received were in accordance with their needs and respectful of their culture	Outcome	Standard 5. Adaptability and Localization
--	---------	---

Accountability to Affected People	Accountability to Affected People Type of indicator (Outcome/ Output)	Standards
-----------------------------------	---	-----------

Indicator 1: Percentage of projects where key decisions are influenced by affected communities at all key stages of the project cycle (assessment, design, implementation, monitoring and final review). (Reference: Core Humanitarian Standard Indicator, CHS Alliance)	Outcome	Standard 5. Adaptability and Localization
--	---------	---

Indicator 2: Percentage of affected people who feel that providers of humanitarian assistance take their opinions into consideration. (Reference: Core Humanitarian Standard Indicator, CHS Alliance)	Outcome	Standard 2. Empowerment & Ownership
---	---------	---

Indicator 3: Percentage of affected people who know how to ask questions, make suggestions or complaints regarding humanitarian assistance and report misconduct and abuse by providers. (Reference: Essential Humanitarian Standard Indicator, CHS Alliance)	Outcome	Standard 1. Participation
---	---------	-------------------------------------

PSEA INDICATOR: of children and adults who have access to a safe and accessible channel for reporting sexual exploitation and abuse. (Reference: Global PSEA Indicator, Global Humanitarian Response Plan)	Outcome	Standard 1. Participation
--	---------	-------------------------------------

S01

Strategic Objective:

Contribute to protecting and saving the lives of people affected and at risk due to the impacts of violence, displacement, disasters and COVID-19 through support for the exercise of rights and intersectoral humanitarian assistance with a focus on protection, age, gender and diversity.

SP1.1

SP1.1:

Contribute to the reduction of imminent protection risks, comprehensive and gender-sensitive response to rights violations of 1.8M people affected by the effects of violence, gender-based violence, displacement, disasters and COVID-19.

Emergency Shelter, NFI CCCM	Emergency Shelter, NFI CCCM Type of indicator (Outcome/ Output)	Standards
Number of shelters rehabilitated and equipped to enable people to benefit from INDICATORS inclusive, dignified and safe physical infrastructure of collective shelters and similar settlements	Output	Standard 1. Participation
Protection	Protection Type of indicator (Outcome/ Output)	Standards
Number of affected people with specific protection needs accessing specialized services.	Output	Standard 3. Inclusion
Number of specific kits delivered to women	Output	Standard 3. Inclusion
WASH	WASH Type of indicator (Outcome/ Output)	Standards
Number of people reached with appropriate hygiene inputs, services and promotion, including menstrual hygiene needs, integrating gender and age approaches.	Output	Standard 3. Inclusion

SP1.2

SP1.2:

Promote functional and gender- responsive rights protection identification, referral and case management systems and mechanisms for people affected by violence, displacement, the effects of disasters, and COVID-19 that include multisectoral services for survivors of gender-based violence and children at risk.

Emergency Shelter, NFI CCCM	Emergency Shelter, NFI CCCM Type of indicator (Outcome/ Output)	Standards
Number of management committees established and trained in the management of shelters and similar environments	Output	Standard 9. Managing Activities
Protection	Protection Type of indicator (Outcome/ Output)	Standards
Percentage of people accessing humanitarian assistance who know how to report abuse or misconduct by humanitarian workers	Output	Standard 4. Two-way Communication

Early recovery	Early recovery Type of indicator (Outcome/ Output)	Standards
Number of people in 90 municipalities that have updated their municipal emergency committees with a gender perspective	Output	Standard 6. Building on local capacity
Number of people trained to identify their risk scenarios with a gender focus, receiving basic equipment to respond when required (disaggregated by age and sex)	Output	Standard 6. Building on local capacity
Number of women participating in community risk management training and leadership processes	Output	Standard 6. Building on local capacity

SP 1.3:

Strengthen access to essential, basic water, sanitation and hygiene (WASH) services, education, health, temporary shelter/camp, food assistance, livelihood rehabilitation, specialized nutrition services integrating gender, age and diversity approaches for 1.8M affected people in 172 municipalities.

Multisector	Multisector Type of indicator (Outcome/ Output)	Standards
IOSS 3.3.1: Pourcentage des personnes affectées qui déclarent que les partenaires humanitaires tiennent compte de leur opinion dans l'identification de leurs besoins, la planification, la mise en œuvre, le suivi et l'évaluation de la réponse	Outcome	Standard 2. Empowerment & Ownership

Food Security and Agriculture	Food Security and Agriculture Type of indicator (Outcome/ Output)	Standards
Total number of households who received training on food use and consumption oriented towards measuring and establishing basic capacities	Output	Standard 6. Building on local capacity
Percentage of households that reduced their reliance on negative coping strategies	Output	Standard 6. Building on local capacity
Number of accountability meetings (beneficiaries, local authorities, etc.)	Output	Standard 4. Two-way Communication
Number of projects with targeting protocols that meet the criteria for transparency, prioritization of vulnerable households and reduction of exclusion risks	Output	Standard 5. Adaptability and Localization
Number of community-based organizations that strengthened their capacities in recovery and protection of livelihoods and productive assets	Output	Standard 9. Managing Activities

Number of projects that integrate women producers in subsistence agricultural production	Output	Standard 3. Inclusion
Number of households that benefited from livelihood interventions to strengthen food security in emergencies and highly vulnerable contexts	Output	Standard 6. Building on local capacity
Number of households that receive support for the establishment of enterprises/micro-enterprises in agricultural production	Output	Standard 6. Building on local capacity
Number of projects that implement actions to strengthen livelihoods for improved food production in emergency contexts	Output	Standard 6. Building on local capacity
Number of workshops on basic SAT concepts, including a disaggregation of participants by gender and disability	Output	Standard 10. Monitoring, Evaluation & Learning

SP2.1

SP2.1:

Strengthen the self-sufficiency of affected people in 172 municipalities through the promotion of intersectoral interventions that improve access to services and livelihood opportunities appropriate to different gender and age groups taking into consideration diversity characteristics.

Emergency Shelter, NFI CCCM	Emergency Shelter, NFI CCCM Type of indicator (Outcome/ Output)	Standards
Number of individuals and families surveyed and/or assessed in shelters or similar settlements disaggregated by age, sex and vulnerable populations (children, elderly, LGBTIQ+, people with chronic or severe medical conditions, pregnant and lactating women, people with disabilities)	Output	Standard 1. Participation

SP2.2

SP2.2:

Prevent and mitigate risks related to violence, gender-based violence, displacement, disasters and COVID19 through the strengthening of the community fabric and infrastructure for the promotion and enforceability of rights and resilience building, integrating a gender approach in 172 municipalities.

Nutrition	Nutrition Type of indicator (Outcome/ Output)	Standards
Number of primary caregivers of children 0-23 months who received infant and young child feeding counseling	Output	Standard 1. Participation
Number of pregnant women who received counseling on feeding, iron and folic acid	Output	Standard 1. Participation

Protection	Protection Type of indicator (Outcome/ Output)	Standards
Number of affected people with specific protection needs accessing livelihood and income generation programmes	Output	Standard 3. Inclusion
Number of people benefiting from community infrastructure and participation mechanisms that are strengthened and/or supported	Output	Standard 6. Building on local capacity
Number of affected people accessing timely, reliable and useful information on rights and services through inclusive and accessible information channels and campaigns	Output	Standard 4. Two-way Communication
Number of participatory assessments and protection monitoring activities jointly conducted with affected communities	Output	Standard 8. Planning and Preparation



© UNICEF/UN02319977/zebrauskas

Iraq

S01

SO 1:

Vulnerable IDPs in camps, acutely vulnerable out-of-camp IDPs and returnees are supported to live in safety and dignity.

SP1.1

SP1.1:

Support access to specialized protection services and maintenance of camp minimum standards for vulnerable IDPs in camps to ensure safe environments at both family and camp level

Education	Education Type of indicator (Outcome/ Output)	Standards
Number of parent teacher associations (PTA)/school-based management committees (SBMC) reactivated or established	Output	Standard 5. Adaptability and Localization
Number of PTA/SBMC trained	Output	Standard 5. Adaptability and Localization
Number of schools with girls' clubs or empowerment groups	Output	Standard 2. Empowerment & Ownership
Number of trainings provided to national NGOs on policy, planning, sector coordination and reporting	Output	Standard 10. Monitoring, Evaluation & Learning
Number of National NGOs trained on policy, planning, sector coordination, reporting, PSEA, prevention of GBV and child safeguarding	Output	Standard 9. Managing Activities
Emergency Shelter, NFI CCCM	Emergency Shelter, NFI CCCM Type of indicator (Outcome/ Output)	Standards
Number of formal camps with community participation/ governance structures that participate in camp coordination and camp management	Output	Standard 1. Participation
Number of formal camps where CwC or community engagement activities are implemented by CCCM actors	Output	
Protection	Protection Type of indicator (Outcome/ Output)	Standards
Number of women who participated in community-based activities (including peaceful co-existence activities)	Output	Standard 3. Building on local capacity
Number of men who participated in community- based activities (including peaceful co- existence activities)	Output	Standard 3. Building on local capacity

Number of girls who participated in community- based activities (including peaceful co- existence activities)	Output	Standard 3. Building on local capacity
Number of boys who participated in community- based activities (including peaceful co- existence activities)	Output	Standard 3. Building on local capacity
Number of women community members trained on protection approaches or issues (excluding GBV or CP)	Output	Standard 6. Building on local capacity
Number of men community members trained on protection approaches or issues (excluding GBV or CP)	Output	Standard 6. Building on local capacity
Number of girls community members trained on protection approaches or issues (excluding GBV or CP)	Output	Standard 6. Building on local capacity
Number of boys community members trained on protection approaches or issues (excluding GBV or CP)	Output	Standard 6. Building on local capacity
Number of community centres established or maintained	Output	Standard 6. Building on local capacity
Number of women key informants reached through community- level protection monitoring	Output	Standard 4. Two-way Communication
Number of men key informants reached through community- level protection monitoring	Output	Standard 4. Two-way Communication
Number of girls key informants reached through community- level protection monitoring	Output	Standard 4. Two-way Communication
Number of boys key informants reached through community- level protection monitoring	Output	Standard 3. Inclusion
Number of women community members trained on GBV prevention and/or risk mitigation and/or response	Output	Standard 6. Building on local capacity
Number of men community members trained on GBV prevention and/or risk mitigation and/or response	Output	Standard 6. Building on local capacity

SP1.2:

Support access to specialized protection services and community-based interventions for acutely vulnerable out-of-camp IDPs to address risks to their safety and well-being.

Education	Education Type of indicator (Outcome/ Output)	Standards
Number of parent teacher associations (PTA)/school-based management committees (SBMC) reactivated or established	Output	Standard 5. Adaptability and Localization

Number of PTA/SBMC trained	Output	Standard 10. Monitoring, Evaluation & Learning
Number of schools with girls' clubs or empowerment groups	Output	Standard 2. Empowerment & Ownership
Number of trainings provided to national NGOs on policy, planning, sector coordination and reporting	Output	Standard 9. Managing Activities
Number of National NGOs trained on policy, planning, sector coordination, reporting, PSEA, prevention of GBV and child safeguarding	Output	Standard 9. Managing Activities
Emergency Shelter, NFI CCCM	Emergency Shelter, NFI CCCM	Standards
	Type of indicator (Outcome/ Output)	
Number of informal sites where CwC or community engagement activities are implemented by CCCM actors	Output	Standard 4. Two way Communication
Protection	Protection Type of indicator	Standards
	(Outcome/ Output)	
Number of men who participated in community- based activities (including peaceful co- existence activities)	Output	Standard 1. Participation
Number of girls who participated in community- based activities (including peaceful co- existence activities)	Output	Standard 1. Participation
Number of boys who participated in community- based activities (including peaceful co- existence activities)	Output	Standard 1. Participation
Number of women community members trained on protection approaches or issues (excluding GBV or CP)	Output	Standard 1. Participation
Number of men community members trained on protection approaches or issues (excluding GBV or CP)	Output	Standard 1. Participation
Number of girls community members trained on protection approaches or issues (excluding GBV or CP)	Output	Standard 1. Participation
Number of boys community members trained on protection approaches or issues (excluding GBV or CP)	Output	Standard 1. Participation
Number of community centres established or maintained	Output	Standard 6. Building on local capacity
Number of women key informants reached through community- level protection monitoring	Output	Standard 4. Two-way Communication

Number of men key informants reached through community-level protection monitoring	Output	Standard 4. Two-way Communication
Number of girls key informants reached through community-level protection monitoring	Output	Standard 4. Two-way Communication
Number of boys key informants reached through community-level protection monitoring	Output	Standard 4. Two-way Communication
Number of women community members trained on GBV prevention and/or risk mitigation and/or response	Output	Standard 4. Two-way Communication
Number of men community members trained on GBV prevention and/or risk mitigation and/or response	Output	Standard 6. Building on local capacity

SP1.3:

Support access to specialized protection services as well as community-based interventions for acutely vulnerable returnees to address risks to their safety and well-being, while the durability of these services and interventions is supported through partnerships with relevant local actors and authorities.

Protection	Protection Type of indicator (Outcome/ Output)	Standards
Number of men who participated in community-based activities (including peaceful coexistence activities)	Output	Standard 1. Participation
Number of girls who participated in community-based activities (including peaceful coexistence activities)	Output	Standard 1. Participation
Number of boys who participated in community-based activities (including peaceful coexistence activities)	Output	Standard 1. Participation
Number of women community members trained on protection approaches or issues (excluding GBV or CP)	Output	Standard 6. Building on local capacity
Number of men community members trained on protection approaches or issues (excluding GBV or CP)	Output	Standard 6. Building on local capacity
Number of girls community members trained on protection approaches or issues (excluding GBV or CP)	Output	Standard 6. Building on local capacity
Number of boys community members trained on protection approaches or issues (excluding GBV or CP)	Output	Standard 6. Building on local capacity
Number of community centres established or maintained	Output	Standard 6. Building on local capacity
Number of women key informants reached through community-level protection monitoring	Output	Standard 4. Two-way Communication

Number of men key informants reached through community-level protection monitoring	Output	Standard 4. Two-way Communication
Number of girls key informants reached through community-level protection monitoring	Output	Standard 4. Two-way Communication
Number of boys key informants reached through community-level protection monitoring	Output	Standard 4. Two-way Communication
Number of women community members trained on GBV prevention and/or risk mitigation and/or response	Output	Standard 6. Building on local capacity
Number of men community members trained on GBV prevention and/or risk mitigation and/or response	Output	Standard 6. Building on local capacity
% households reporting that MPCA has helped them meeting basic needs	Output	Standard 4. Two-way Communication



Libya

Strategic Objective 1:

Respond to outbreaks of disease and risks to physical and mental well-being, while strengthening the protection of civilians in accordance with international humanitarian law, human rights law and other international legal frameworks.

Education	Education Type of indicator (Outcome/ Output)	Standards
Number of education actors (f/m) oriented on EiE policy, planning, information management, sector coordination and INEE 56 Minimum Standards	Output	Standard 9. Managing Activities
Health	Health Type of indicator (Outcome/ Output)	Standards
Number of health facilities and community centers providing MHPSS services	Outcome	Standard 6. Building on local capacity
Number of community health workers trained through capacity building and refresher training.	Outcome	Standard 6. Building on local capacity
Protection	Protection Type of indicator (Outcome/ Output)	Standards
Number of informal community committee leaders and members who receive training/capacity support (cumulative interventions).	Output	Standard 6. Building on local capacity
Number of child protection actors trained on specific CP technical areas (disaggregated by age/sex)	Output	Standard 6. Building on local capacity
Protection	Protection Type of indicator (Outcome/ Output)	Standards
Number of informal community committee leaders and members who receive training/capacity support (cumulative interventions).	Output	Standard 6. Building on local capacity
Number of children and caregivers benefitting from gender, age and disability sensitive MHPSS activities	Output	Standard 3. Inclusion
Number of caregivers, children and community members trained and/or sensitized on CP issues incl. CP and GBV risks, CP/ GBV referrals (disaggregated by age/sex/ disability)	Output	Standard 6. Building on local capacity
Number of non-child protection actors (national/ local authorities/ civil society actors) trained on CP concepts, including CP mainstreaming (disaggregated by age/sex)	Output	Standard 6. Building on local capacity

Number of individuals trained on GBV Prevention and Response, Case Management including static, mobile and remote service delivery	Output	Standard 6. Building on local capacity
Number of people reached with awareness sessions on GBV prevention and response and service availability	Output	Standard 4. Two-way Communication
Number of child protection actors trained on specific CP technical areas (disaggregated by age/sex)	Output	Standard 6. Building on local capacity
Number of women and girls participating in life skills activities	Output	Standard 3. Inclusion
Number of women and girls participating in structured PSS activities	Output	Standard 3. Inclusion
Number of people assisted by repaired/ rehabilitated community/public infrastructure	Output	Standard 6. Building on local capacity



Mali



Accountability to Affected People	Accountability to Affected People Type of indicator (Outcome/ Output)	Standards
% de personnes affectées pensant que l'aide reçue couvre leurs besoins essentiels	Outcome	Standard 10. Monitoring, Evaluation & Learning
% de personnes affectées percevant que l'aide arrive quand elles en ont besoin	Outcome	Standard 10. Monitoring, Evaluation & Learning
% de personnes affectées estimant que l'assistance touche les personnes qui en ont le plus besoin	Outcome	Standard 10. Monitoring, Evaluation & Learning
% des personnes affectées pensant que l'aide prend en compte les besoins spécifiques des personnes (déplacés, retournés, rapatriés, populations hôtes, handicapés, personnes âgées, enfants, filles, garçons)	Outcome	Standard 3. Inclusion
% de personnes affectées pensant que l'assistance reçue leur permet d'améliorer leurs conditions de vie et aide à amorcer leur relèvement	Outcome	Standard 10. Monitoring, Evaluation & Learning
% des personnes estimant que les acteurs humanitaires sont redevables et respectueux des droits des populations	Outcome	Standard 10. Monitoring, Evaluation & Learning
% des personnes estimant que les acteurs humanitaires sont redevables et respectueux des droits des populations	Outcome	Standard 10. Monitoring, Evaluation & Learning
% de femmes et jeunes filles qui estiment participer à l'organisation et l'assistance humanitaire ?	Outcome	Standard 3. Inclusion
Vos besoins d'information sur la COVID-19 et autres urgences sont-ils assurés ?	Outcome	Standard 8. Planning and Preparation

Résultat attendu 1:

L'évaluation des besoins et analyse des perceptions et des priorités des communautés.

Accountability to Affected People	Accountability to Affected People Type of indicator (Outcome/ Output)	Standards
Indicateur 1 : Partage d'information communautaire, et participation des communautés aux évaluations des besoins	Outcome	Standard 15. Data Management
Indicateur 2 : Participation des communautés à l'analyse de la réponse à apporter	Outcome	Standard 10. Monitoring, Evaluation & Learning

S02

Résultat attendu 2:

Inclusion systématique des communautés affectées dans la planification au niveau pays.

Accountability to Affected People	Accountability to Affected People Type of indicator (Outcome/ Output)	Standards
Indicateur 1 : Intégration de la perception des communautés dans la planification sectorielle et intersectorielle	Outcome	Standard 8. Planning and Preparation
Indicateur 2 : Coordination du mécanisme d'inclusion des informations communautaires dans la programmation	Outcome	Standard 8. Planning and Preparation

S03

Résultat attendu 3:

Développement d'une approche dotée de ressources qui intègre, le partage d'information, la participation et le retour d'information.

Accountability to Affected People	Accountability to Affected People Type of indicator (Outcome/ Output)	Standards
Indicateur 1 : Disponibilité de ressources humaines et financières	Outcome	Standard 16. Resource Mobilization and Budgeting

S04

Résultat attendu 4:

Mise en œuvre et ajustement des programmes coordonnés à travers l'information, la participation communautaire et des feedbacks.

Accountability to Affected People	Accountability to Affected People Type of indicator (Outcome/ Output)	Standards
Indicateur 1 : Information de la communauté	Outcome	Standard 1. Participation
Indicateur 2 : Coordination de la participation communautaire à travers le HTC	Outcome	Standard 12. Partner Coordination

Indicateur 3 : Coordination du mécanisme du feedback et des plaintes en faveur des communautés Outcome Standard 4. Two-way Communication

Résultat attendu 5:

Renforcement de capacités des membres du GTR et des groupes communautaires.

S05

Accountability to Affected People	Accountability to Affected People Type of indicator (Outcome/ Output)	Standards
Indicateur 1 : Formation des membres du GTR sur le mécanisme de redevabilité	Outcome	Standard 15. Data Management
Indicateur 2 : Formation des points focaux communautaires en vue de l'enregistrement et de la remontée des informations	Outcome	Standard 15. Data Management

S06

Résultat attendu 6:

Développement d'un processus indépendant et participatif pour évaluer, vérifier et tirer des enseignements des opérations.

Accountability to Affected People	Accountability to Affected People Type of indicator (Outcome/ Output)	Standards
Indicateur 1 : Qualité et responsabilité de la réponse au niveau national vérifiées par rapport à la Norme humanitaire fondamentale sur la qualité et la responsabilité (CHS)	Outcome	Standard 8. Planning and Preparation
Indicateur 2 : Évaluations conçues et mises en œuvre en consultation avec les communautés	Outcome	Standard 8. Planning and Preparation



© UNICEF/UN0805487/Fatoumata Di

Mozambique

S01

Strategic Objective 1 (Lifesaving):

Save lives and alleviate suffering through safe, equitable, gender-sensitive and principled intersectoral assistance to the most vulnerable groups, including those displaced, directly impacted host communities and non-displaced people.



© UNICEF/JUN0799369/Franco

Emergency Shelter, NFI CCCM	Emergency Shelter, NFI CCCM Type of indicator (Outcome/ Output)	Standards
Number of IDPs with access to inclusive and representative governance structure	Output	Standard 5. Adaptability and Localization
Health	Health Type of indicator (Outcome/ Output)	Standards
Number of community members receiving health IEC messages	Outcome	Standard 4. Two-way Communication
Protection	Protection Type of indicator (Outcome/ Output)	Standards
Number of community-based volunteers (eg. Protection focal points have built capacity in protection (eg. Mainstreaming, monitoring and others)	Output	Standard 6. Building on local capacity
WASH	WASH Type of indicator (Outcome/ Output)	Standards
Number of people reached with hand-washing behaviour-change programmes	Output	Standard 1. Participation

S02

Strategic Objective 2 (Life-Sustaining):

Enhance timely and adapted access to essential services, including basic services, livelihoods and assistance that will strengthen the resilience of people impacted by the crisis.

Emergency Shelter, NFI CCCM	Emergency Shelter, NFI CCCM Type of indicator (Outcome/ Output)	Standards
Number of IDPs with access to functioning complaints and feedback mechanisms	Output	Standard 5. Adaptability and Localization
Protection	Protection Type of indicator (Outcome/ Output)	Standards
Number of locations (districts) with presence of functional community- based protection and risk reduction structures or mechanism in place	Output	Standard 6. Building on local capacity
Number of women and girls accessing group activities (disaggregated by age and gender, diversity) in friendly and secure spaces and other empowerment activities	Output	Standard 3. Inclusion

Strategic Objective 3 (Protection):

Address the protection risks and needs of affected people – including gender-based violence and child rights violations – and strengthen the protection environment in northern Mozambique through collective and intersectoral action to protect women and girls, men and boys as well as uphold commitments to the centrality of protection across the humanitarian response in Mozambique.

Protection	Protection Type of indicator (Outcome/ Output)	Standards
Number of functional community-based protection mechanisms or structure for child protection	Output	Standard 6. Building on local capacity





Myanmar

Accountability to Affected People	Accountability to Affected People Type of indicator (Outcome/Output)	Standards
Percentage of affected people who can access safe and accessible feedback and complaint channels	Outcome	Standard 8. Planning and Preparation
Percentage of affected people who feel that their opinions are considered in humanitarian decision-making Percentage of affected people who feel that the assistance received is appropriate and tailored to their need	Outcome	Standard 3. Inclusion
Percentage of affected people who feel that the assistance received is appropriate and tailored to their need	Outcome	Standard 10. Monitoring, Evaluation & Learning
Number of humanitarian workers reached by capacity-building sessions on response-wide accountability (including AAP, PSEA and Gender).	Outcome	Standard 14. Human resources and organizational structure

Sp1.2

SP1.2:

Emergency support to 6.2 million people targeted for assistance is enhanced by expanding engagement with and building the capacity of local actors to provide impartial, timely and relevant life-saving humanitarian response to IDPs (including displaced stateless people), conflict and disaster-affected communities and through improved needs assessments.

Accountability to Affected People	Accountability to Affected People Type of indicator (Outcome/Output)	Standards
Number of collective AAP perception surveys conducted	Outcome	Standard 15. Data Management

Multisector	Multisector Type of indicator (Outcome/ Output)	Standards
Number of local partners engaged in the response across all clusters	Outcome	Standard 12. Partner Coordination
% of MHF funding local partners (direct or indirect)	Outcome	Standard 16. Resource Mobilization and Budgeting
Number of capacity building trainings delivered involving local actors	Outcome	Standard 6. Building on local capacity

Strategic Objective 2:

Living standards of vulnerable people of all genders and diversities are improved and their resilience is strengthened.

SP2.2:

Livelihoods opportunities, food security and nutritional status are secured and improved for 3.5 million moderately and severely food insecure people through the provision of food and nutrition assistance and support for sustainable and resilient agriculture

Education	Education Type of indicator (Outcome/ Output)	Standards
Number of parents/caregivers accessing guidance on open learning and MHPSS for their children, adolescents, and youth	Output	Standard 9. Managing Activities
Number of communities supported to develop contingency preparedness plans related to continuity of education	Output	Standard 9. Managing Activities
Protection	Protection Type of indicator (Outcome/ Output)	Standards
Number of communities reached with protection monitoring	Output	Standard 5. Adaptability and Localization
Number of community-based protection structures strengthened and enhanced	Output	Standard 6. Building on local capacity



Niger

S01

Objectif stratégique 1:

D'ici fin 2022, la morbidité et mortalité sont réduites pour 2 018 618 personnes les plus vulnérables dans les départements aux besoins accrus.

SP1.1

SP 1.1:

D'ici fin 2022, 885 738 femmes, hommes, filles, garçons des groupes les plus vulnérables (personnes handicapées, personnes âgées, enfants séparés et/ou non accompagnés, etc.) ayant survécu aux incidents liés aux engins explosifs, de violences basées sur le genre ou d'exploitation et abus sexuels ont une prise en charge holistique.

Protection	Protection Type of indicator (Outcome/ Output)	Standards
Nombre de mécanismes communautaires redynamisé/mis en place/suivi/renforcé	Output	Standard 6. Building on local capacity
Nombre de personnes atteintes avec les activités de cohésion sociale	Output	Standard 1. Participation

SP2.1

SP 2.1:

D'ici fin 2022, 450 352 femmes, hommes, filles, garçons des groupes les plus vulnérables (personnes handicapées, personnes âgées, etc.), dans les départements aux besoins aigus, ont un accès continu à des services sociaux de base de qualité, et des habitats dignes et sensibles au genre.

Education	Education Type of indicator (Outcome/ Output)	Standards
Nombre de garçons et filles (4 à 17 ans) y compris ceux en situation de handicap affectés par les crises qui ont accès à une offre d'éducation adaptée à ses besoins	Output	Standard 3. Inclusion
Education	Education Type of indicator (Outcome/ Output)	Standards
Nombre de garçons et filles (4 à 17 ans) y compris ceux en situation de handicap affectés par les crises qui ont accès à une offre d'éducation adaptée à ses besoins	Output	Standard 3. Inclusion
WASH	WASH Type of indicator (Outcome/ Output)	Standards
Affected people benefit from community tailored gender- and age-sensitive hygiene messages aiming at hygienic behavior and practices as per the sector's standards	Output	Standard 3. Inclusion

Objectif stratégique 3:

D'ici fin 2022, 157 143 ménages des groupes les plus vulnérables (personnes handicapées, personnes âgées, etc.) ayant eu leur résilience renforcée et leur vulnérabilité réduite face aux chocs.

SP 3.2:

D'ici fin 2022, 157 143 ménages des groupes les plus vulnérables (personnes handicapées, personnes âgées, etc.) dans les départements aux besoins aigus, ont leurs capacités d'adaptation et d'atténuation renforcées face aux chocs (changements climatiques, conflits, etc.) et leurs effets connexes.

Protection	Protection Type of indicator (Outcome/ Output)	Standards
% des mécanismes communautaires en place intégrant les femmes, les filles les hommes et les garçons pour la prévention des VBG/ESA fonctionnels	Output	Standard 6. Building on local capacity
% des mécanismes communautaires en place intégrant les femmes, les filles les hommes et les garçons pour la prévention des VBG/ESA fonctionnels	Output	Standard 6. Building on local capacity



Nigeria

SO3

Strategic Objective 3:

Incremental reduction of severity of humanitarian needs, such that some people's needs for recurrent multi- sectoral humanitarian aid decline by end 2023.

SP3.1

SP 3.1:

Achieving alternative and durable solutions as opportunities allow.

Education	Education Type of indicator (Outcome/ Output)	Standards
Number of school based management committee (SBMCs) members (m/f) trained	Output	Standard 9. Managing Activities
Early recovery	Early recovery Type of indicator (Outcome/ Output)	Standards
Number of people benefiting from efforts to foster social cohesion, community reconciliation and security and peace-building	Output	Standard 1. Participation
Number of LGAs and CSOs staff supported with capacity building and equipment to enhance governance and service delivering	Output	Standard 6. Building on local capacity

SP3.2

SP 3.2:

Strengthening self-reliant livelihoods for IDPs.

Emergency Shelter, NFI CCCM	Emergency Shelter, NFI CCCM Type of indicator (Outcome/ Output)	Standards
Number of partners and local authorities trained in CCCM principles and standards, protection and gender mainstreaming, and Protection from Sexual Exploitation and Abuse (PSEA)	Output	Standard 6. Building on local capacity
Number of IDP trained in CCCM and CCCM related activities	Output	Standard 6. Building on local capacity
Number of site managers, local and IDP leaders trained on DMS / CCCM.	Output	Standard 6. Building on local capacity
Number of community centers established and handed over to community leadership	Output	Standard 1. Participation

Food Security and Agriculture	Food Security and Agriculture Type of indicator (Outcome/ Output)	Standards
-------------------------------	--	-----------

Number of people with access to capacity- building training	Output	Standard 6. Building on local capacity
---	--------	--



protection violations.

Strategic Objective 4:

The affected population enjoys adequate protection of their rights including safety and security, unhindered access to humanitarian assistance, and solutions that fulfil norms and standards.

SO4

SP 4.1:

Within the abilities of operational humanitarian organizations, victims of protection violations access services and care necessary for recovery and justice, and preventative measures reduce the risk of

SP4.1

Protection	Protection Type of indicator (Outcome/ Output)	Standards
------------	---	-----------

Gender-based Violence: Number of beneficiaries who demonstrate improved capacity from peer support, mentoring/ coaching, skills building and empowerment programmes	Outcome	Standard 6. Building on local capacity
---	---------	--

Education	Education Type of indicator (Outcome/ Output)	Standards
-----------	--	-----------

Number of community members reached with back-to-school messages	Output	Standard 4. Two-way Communication
--	--------	---

Number of stakeholders trained on EIE response/ data collection, etc.	Output	Standard 10. Monitoring, Evaluation & Learning
---	--------	--

Occupied Palestinian Territory

S02

Strategic Objective 2:

The basic needs of vulnerable Palestinians living under occupation are met through the provision of quality basic services and improved access to resources, in accordance with the rights of protected persons under International Humanitarian Law.



© UNICEF/UN0413499/Hazboun/OXFAM

Education	Education Type of indicator (Outcome/ Output)	Standards
Number of vulnerable female and male students and teachers with improved access to safe and inclusive education in vulnerable areas of West Bank and Gaza	Output	Standard 3. Inclusion
Number of children, teachers and other education personnel unable to effectively respond to emergencies supported in preparing and responding to emergencies, including education-related violations, escalations in conflict and natural disasters	Output	Standard 3. Inclusion

S03

Strategic Objective 3:

The capacity of vulnerable Palestinians to cope with and overcome protracted crisis, including from environmental threats, is supported, while solutions to violations and other root causes of threats and shocks are pursued.

Multisector	Multisector Type of indicator (Outcome/ Output)	Standards
Number and % of children and adults who have access to a reporting mechanism that can handle SEA complaints	Outcome	Standard 1. Participation
% of the affected population (disaggregated by sex and age) reached through consultation in the establishment of community-based complaint mechanisms (CBCMs), awareness activities and community mobilization interventions on PSEA including how to report SEA-related complaints (disaggregated by type of PSEA communication materials developed for each population group identified)	Outcome	Standard 1. Participation
% of sites reached with communications materials on PSEA, how to report on SEA and how to access victim/survivor-centered assistance (disaggregated by type of PSEA communication materials developed for each population group identified)	Outcome	Standard 3. Inclusion

Somalia



Strategic Objectives 1:

Reduce loss of life for 5 million of the most severely vulnerable people, including 1 million children under 5, by decreasing the prevalence of hunger, acute malnutrition, public health threats and outbreaks, and abuse, violence, and exposure to explosive ordinances by the end of 2022.

S01.3:

Provide access to specialized age, gender and disability sensitive: MHPSS, child protection, GBV and mine action services for 500,000 persons, including boys, girls, civilian victims of indiscriminate attacks by armed actors, adolescents, persons with disabilities and older persons facing life-threatening risks of abuse, neglect, violence, exploitation, injury, death, and severe distress, by the end of 2022.

Protection	Protection Type of indicator (Outcome/ Output)	Standards
Number of people reached by community-led messaging on key child protection risks, social norms, harmful practices, MRE and related information on CP service and mitigation measures	Output	Standard 4. Two-way Communication

Strategic Objective 2:

Sustain the lives of 5.5 million people requiring humanitarian assistance, including 3.9 million non-IDPs, 1.6 million IDPs and people with disability across 74 districts, by ensuring safe, equitable and dignified access to livelihoods and essential services by the end of 2022.

S02.1:

Scale up and provide WASH, Education, Nutrition, Health, Shelter, NFIs and Protection integrated services to 3.9 million non-IDPs including persons with disability in 74 districts by the end of 2022.

Protection	Protection Type of indicator (Outcome/ Output)	Standards
Number of individuals, including at-risk girls, boys, adolescents, persons with disabilities and older persons, with access to community-based prevention and response MHPSS, legal, child protection, GBV and mine action services	Outcome	Standard 3. Inclusion

S02.2:

Scale up and provide CCCM, WASH, Education, Health, Nutrition, Shelter, NFIs, and Protection and NFIs integrated services to 1.6 million IDPs including persons with disability by the end of 2022.

S01

SP1.3

S02

SP2.1

SP2.2

Emergency Shelter, NFI CCCM	Emergency Shelter, NFI CCCM Type of indicator (Outcome/ Output)	Standards
Number of IDP sites with information on availability of services	Outcome	Standard 4. Two-way Communication
Number of individuals reporting they have access to complaint and feedback mechanisms	Outcome	Standard 4. Two-way Communication
% of IDP settlements that meet safety standards as assessed in safety audits and child led participatory approaches by partners of relevant cluster	Outcome	Standard 8. Planning and Preparation

S03

Strategic Objective 3:

Uphold commitments to the centrality of protection across the humanitarian response through protection mainstreaming, accountability to affected populations and monitoring of the protection environment.

SP3.1

SP 1:

Promote collective action on the centrality of protection by ensuring complaint and feedback mechanisms, protection mainstreaming procedures, PSEA and child safeguarding focal points, are in place across the humanitarian response in 2022.

WASH	WASH Type of indicator (Outcome/ Output)	Standards
% of Complaint/feedback related to WASH that we received and responded to	Output	Standard 4. Two-way Communication

S02.2

S02.2:

Scale up and provide CCCM, WASH, Education, Health, Nutrition, Shelter, NFIs, and Protection and NFIs integrated services to 1.6 million IDPs including persons with disability by the end of 2022.

Multisector	Multisector Type of indicator (Outcome/ Output)	Standards
% of HRP projects that completed a protection risk, gender age marker and disability inclusion analysis at the onset of the project cycle	Outcome	Standard 8. Planning and Preparation
Number of feedback/complaints that were received and responded to disaggregated by age, sex, ability	Outcome	Standard 1. Participation

S03.2:

Increase the number of individuals reached by protection monitoring of human rights violations and protection training initiatives, with particular focus in districts with exposure to armed conflict, violence and individuals facing forced eviction.

Education	Education Type of indicator (Outcome/ Output)	Standards
Number of classrooms constructed or rehabilitated with child-friendly and inclusive (incl. children with disabilities) WASH facilities available to emergency- affected school children and youth	Output	Standard 3. Inclusion
Emergency Shelter, NFI CCCM	Emergency Shelter, NFI CCCM Type of indicator (Outcome/Output)	Standards
Number of IDPs with equitable access to information on availability of services and inclusive CMC structures	Output	Standard 4. Two-way Communication



South Sudan

Strategic Objective S02:

Vulnerable people are exposed to fewer protection threats and incidents, and those who are exposed have safe, tailored, timely and dignified access to appropriate services through integrated and inclusive humanitarian action that promotes centrality of protection priorities.

Specific Objective SP2.1:

Ensure that women, men, girls and boys have safe access to quality basic, gender-responsive, ability- challenged accessible services, including water, sanitation and hygiene, nutrition, education, protection and health, including sexual and reproductive health.

Protection	Protection Type of indicator (Outcome/ Output)	Standards
Number of individuals, including at- risk girls, boys, adolescents, persons with disabilities and older persons, with access to community-based prevention and response Mental Health and Psychosocial Support (MHPSS), child protection, GBV and mine action services	Outcome	Standard 3. Inclusion
Multisector	Multisector Type of indicator (Outcome/ Output)	Standards
Percentage of the target population (disaggregated by age, sex and disability) who feel adequately informed about the different services available to them	Outcome	Standard 1. Participation

SP2.4

Specific Objective SP2.4:

Reduce the suffering of girls, boys, women, men, the elderly, persons with disabilities, and other persons with specific needs at risk of or who experienced violence, including gender-based violence, sexual exploitation and abuse, exploitation and neglect through the provision of specialized protection and multi-sectoral services.

Protection	Protection Type of indicator (Outcome/ Output)	Standards
Percentage of beneficiaries who report allegations of sexual abuse, mistreatment or harassment by humanitarian personnel disaggregated by age, sex and disability	Outcome	Standard 4. Two-way Communication

SP2.6

Specific Objective SP2.6:

Promote collective action on Accountability to Affected Populations to ensure the population groups targeted to receive assistance are consulted throughout the entire cycle of the response, and their needs are taken into account in decision-making by humanitarians.

Accountability to Affected People	Accountability to Affected People Type of indicator (Outcome/Output)	Standards
Number of beneficiaries (disaggregated by age, sex and diversity) who have access to safe, child and gender sensitive complaint, feedback and reporting channels in humanitarian response sites for reporting sensitive issues and concerns in aid delivery and misconduct by aid workers	Outcome	Standard 1. Participation
Percentage of beneficiaries (disaggregated by age, sex and ability) who report they have access to complaints and feedback mechanisms	Outcome	Standard 1. Participation

Percentage of decision-making mechanisms involve national and local organizations and community members	Outcome	Standard 2. Empowerment & Ownership
Percentage of beneficiaries (disaggregated by age, sex and ability) who feel their opinions are taken into account in decision-making by humanitarians	Outcome	Standard 2. Empowerment & Ownership
Percentage of cases received in a Complaints Feedback Mechanism that have been “considered as resolved”	Outcome	Standard 4. Two-way Communication
Percentage of national and local organizations and community members involved in decision-making mechanisms	Outcome	Standard 2. Empowerment & Ownership

S03

Strategic Objective S03:

Vulnerable people withstand and recover from shocks, have their resilience to shocks and stresses built, and seek solutions that respect their rights.

SP3.2

Specific Objective SP3.2:

Enhance resilience capacity in prioritized locations.

Emergency Shelter, NFI CCCM	Emergency Shelter, NFI CCCM Type of indicator (Outcome/ Output)	Standards
Number of community education committee members and local education officials trained in school management, Psychosocial Support (PSS) and Disaster Risk Reduction in Education (DRR)	Outcome	Standard 9. Managing Activities
Number of community consultative meetings conducted to identify needs, participate in response, and reduce impact on their lives (including men, women, boys and girls and people with disability)	Outcome	Standard 5. Adaptability and Localization

SP3.3

Specific Objective SP3.3:

Strengthen national system to enhance resilience capacity (School DRR/ Government-led contingency planning).

Protection	Protection Type of indicator (Outcome/ Output)	Standards
Number of development and Government actors engaged to strengthen community resilience and improve return conditions for Returnees (Refugee & IDPs) and Host Communities	Outcome	Standard 8. Planning and Preparation
Number of implemented community level Quick Impact projects to create conducive conditions for reintegration of returnees and sustainable returns	Outcome	Standard 6. Building on local capacity

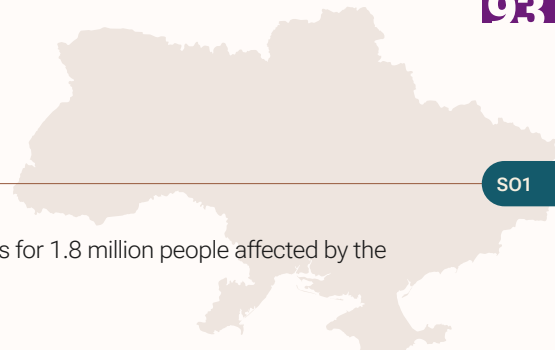
Specific Objective SP3.4:

Strengthen coordination and contextual analysis of needs conducted at national and sub-national levels.

Multisector	Multisector Type of indicator (Outcome/ Output)	Standards
Number of community consultative meetings conducted to identify needs, participate in response, and reduce impact on their lives (including men, women, boys and girls and people with disability)	Outcome	Standard 1. Participation
Number of reports analyzed on returns through return verification at community level, area-based assessments and service mapping in high return areas	Outcome	Standard 1. Participation



Ukraine



S01

Strategic Objective S01:

Provide emergency and time-critical assistance and ensure access to basic essential services for 1.8 million people affected by the conflict (including 144,000 IDPs), exacerbated by COVID-19

Multisector	Multisector Type of indicator (Outcome/ Output)	Standards
% of people receiving humanitarian assistance are satisfied with the assistance received in 2022	Outcome	Standard 1. Participation
Multi-purpose cash	Multi-purpose cash Type of indicator (Outcome/Output)	Standards
% of people satisfied with MPC assistance provided	Output	Standard 1. Participation

S02

Strategic Objective S02:

Respond to the protection needs and strengthen protection of 1.4 million conflict-affected people, including IDPs, with due regard to international norms and standards.

SP2.3

Specific Objective SP2.3:

Promote NGCA residents' freedom of movement and access to essential services and humanitarian assistance on both sides of the "contact line".

Education	Education Type of indicator (Outcome/ Output)	Standards
Number of male and female children and youth provided with consultations on continuation of their education	Output	Standard 8. Planning and Preparation
Protection	Protection Type of indicator (Outcome/ Output)	Standards
Number of local and displaced women, men, girls and boys supported through peaceful coexistence/peacebuilding/ social cohesion projects, or community support initiatives	Output	Standard 3. Inclusion

S03

Strategic Objective S03:

Ensure implementation of an international humanitarian exit strategy in Government Controlled Areas from 2021 to 2023.

SP3.1

Specific Objective SP3.1:

Increase national and regional Government ownership of and responsibility for the provision of services that deliver humanitarian assistance in GCA.

Multisector	Multisector Type of indicator (Outcome/ Output)	Standards
% of Territorial Communities (including CMAs) supported by humanitarian partners to complete the decentralization of essential services	Output	Standard 1. Participation

SP3.2

Specific Objective SP3.2:

Strengthen capacity of local responders (NGOs, Civil Society Organizations (CSOs), territorial communities (hromadas), and private sector) to complement the Government-led response.

Multisector	Multisector Type of indicator (Outcome/ Output)	Standards
% of direct humanitarian funding to local responders (national, local NGOs and CSOs)	Output	Standard 16. Resource Mobilization and Budgeting



Yemen

S01

Strategic Objective 2:

Enhanced Accountability to Affected Population (AAP) into response planning, delivery and monitoring.

Accountability to Affected People	Accountability to Affected People Type of indicator (Outcome/ Output)	Standards
Yemen HRP Community Engagement and Accountability to Affected CEAAP People (AAP) Working Group is WG operational	Outcome	Standard 4. Two-way Communication
Response-wide Collective Feedback Mechanism System framework is established to collect, analyze and CEAAP report agencies/clusters' complaints WG and feedback for the HCT overview and guidance and perception surveys are undertaken	Outcome	Standard 4. Two-way Communication

SP2.1

Specific Objective 2.1:

Improved living standards and resilience of crisis-affected vulnerable women, girls, boys and men through the provision of multi-sectoral, inclusive and quality basic services and assistance ensuring safe access.

Education	Education Type of indicator (Outcome/ Output)	Standards
Number of girls and boys, caregivers and community members who received awareness sessions activities	Output	Standard 1. Participation

Emergency Shelter, NFI CCCM	Emergency Shelter, NFI CCCM Type of indicator (Outcome/ Output)	Standards
Number of people incentivized through cash for work for site maintenance (disaggregated)	Output	Standard 1. Participation
Number sites with safety and risk prevention community-led projects	Output	Standard 1. Participation

Protection	Protection Type of indicator (Outcome/ Output)	Standards
Number of community centres providing protection assistance and services supported	Output	Standard 6. Building on local capacity
Number of persons benefiting from community resiliency support (not including CP or GBV)	Output	Standard 6. Building on local capacity
Number of persons benefiting from protection training or capacity-building	Output	Standard 6. Building on local capacity

Number persons benefiting from community-based initiatives on protection, including community development, awareness-raising, conflict prevention/resolution and peaceful co-existence	Output	Standard 1. Participation
Number of persons engaged as members of community-based protection networks and committees	Output	Standard 1. Participation
Number of persons directly consulted or assessed through protection, human rights, and IHL monitoring	Output	Standard 8. Planning and Preparation
Multisector	Multisector Type of indicator (Outcome/ Output)	Standards
Number of refugees and asylum-seekers involved in community network	Output	Standard 3. Inclusion

S03

Strategic Objective 3:

Prevent and mitigate protection risks and facilitate redress for women, girls, boys and men, especially the displaced and most vulnerable civilians, through building resilience, provision of humanitarian assistance, specialized protection services and advocacy.

SP3.1

Specific Objective 3.1:

Protection risks mitigated and protection incidents addressed through safe and inclusive access to and provision of quality, safe and integrated protection and humanitarian services and assistance to people at risk with due account to age, gender, disability and social status.

Emergency Shelter, NFI CCCM	Emergency Shelter, NFI CCCM Type of indicator (Outcome/ Output)	Standards
Number of members of functional community self-organizing committees with inclusive, gender-balanced participation of both men and women	Output	Standard 1. Participation
Number of community-based projects aimed at site management and community ownership	Output	Standard 1. Participation
Number of mass information campaigns conducted	Output	Standard 4. Two-way Communication
Number of sites with functional Complaints and Feedback Mechanisms established	Output	Standard 1. Participation

Social Sciences for Community engagement in Humanitarian Action

Desk review of Community Engagement indicators across Humanitarian Response Plans (2022) and Documentation on Community Engagement

